

Connecting Albert County



December 2020

FREE PUBLICATION

Painting by Norm Bradford of Farm Life Studio and B&B

Christmas in the Country 2020. It's Happening!

The Fundy Studio Tour presents the 19th Annual Christmas in the Country event with a difference!

"Christmas in the Country" is a tour of open art and artisan studios, farmers' markets, museums, bakers, restaurants, winery, brewers and more. The tour offers visitors the best of Albert County and this year, for the first time, the event runs over two weekends!

On two weekends (November 28th-29th and December 5th-6th) from Riverview to Alma, Albert County welcomes you. Hours are 10am-5pm on Saturdays and 11am-4pm on Sundays.

Start at Briggs' Maple and Glass Roots in Riverview and go all the way to Alma.

Artists, artisans and creators of unique gifts, crafted beers, wines and delightful foods will be open for your visiting pleasure.

Find fresh, local and unique goods available for gift-giving or for your own pleasure.

Enjoy a beautiful drive to visit talented, welcoming artisans and producers of delicious foods along the way.

Great care will be taken by participating local businesses to protect visitors while visitors are asked to wear face masks.

Pick up your tour maps at Briggs Maples or Glass Roots in Riverview (or see page 3) and enjoy. If you are visiting for the first time or are a regular, you will be enchanted by exceptional discoveries and warm welcomes.

Contributed by Ruth Bradford

Inside:

- Christmas in the Country~1
- Christmas Markets~2
- WOW Calendar~2
- Christmas in the Country Map~3
- Blue Carbon: Salt Marshes & Climate Change~4
- Historical Society Lifetime Membership for Beulah Morrissey~7
- Successful Live Streams~8
- FFV Food Forest~9
- Winter Carnival Benches~9
- BACH Foundation~10
- Hillsborough Public Library~10
- Calendar~11
- Albert County 175~12
- Connecting Albert County Supporters~14

Connecting Albert County

December 2020
Vol. 6, No. 12
ISSN 2369-1174/1182 (digital)

Our Mission:

Building connections and fostering pride of place and culture in rural Albert County by publishing in print & online.

Connecting Albert County Inc. is a registered non-profit organization.

Connecting Albert County Board of Directors:

Heather Alward, Ronda Fraser, Joseph Gallant, Shannon Gaythorpe, Karen Lindsay & Victoria Stroud-Arsenault

CAC part-time coordinator/ editor: Janet Wallace

Contributors: Ruth and Norm Bradford, Don Coleman, Lynn Colepaugh, Lynne Greenblatt, Kat Hallett, Dawne (Wright) McLean, Kevin Snair, Victoria Stroud-Arsenault, Stephanie Wood

To volunteer with CAC, advertise, submit articles or letters, email [info@](mailto:info@ConnectingAlbertCounty.org)

[ConnectingAlbertCounty.org](mailto:info@ConnectingAlbertCounty.org) or mail CAC, 8 Forestdale Road Riverside-Albert, NB E4H 3Y7

Letters and articles may be edited. Statements in our publication and website do not necessarily reflect the views and opinions of Connecting Albert County's volunteers and staff.

Subscribe to our free monthly e-publication (and see past issues) at www.ConnectingAlbertCounty.org/e-magazine

Like us at www.facebook.com/ConnectingAlbertCounty



The 19th Annual
Christmas
in the
Country

Saturday
Nov 28th & Dec 5th
10 am to 5 pm

Sunday
Nov 29th & Dec 6th
11 am to 4 pm

The Fundy Studio Tour
presents an old fashioned Christmas in Albert County. For two weekends, enjoy a safe and relaxed tour of art studios, crafters, local cafes, and museums!

Annual Hillsborough Christmas Market

The Annual Christmas Market at The Old Church Farmers' Market will run over two weekends this year to avoid having a large crowd coming at one time. Open Saturdays, Nov. 28, and Dec. 5, 10am to 5pm, and Sundays, Nov. 29 and Dec 6., 11 am to 4 pm.

The Old Church Farmers' Market. 2807 Main St., Hillsborough.
www.facebook.com/The-Old-Church-Farmers-Market-110454250674986.

Foods Of The Fundy Valley's Annual Holiday Shopping Event

The event will take place Saturday, December 5th (10am-8pm) and Sunday, December 6th (10am-4pm). Join us at Farmer Brown's Greenhouse and shop from 40+ local vendors, take a wagon ride, roast a s'more or grab some wood-fired pizza. This is surely an event you don't want to miss. Located at 371 Osborne Corner, Dawson Settlement. Event updates will be posted on Facebook.

WOW Calendars

Women of the Wilderness (WOW), a local hiking/camping/ outdoor group, has created a 12-month calendar of gorgeous nature photos from the area taken by WOW's amateur photographers. Calendars will be available in early December in time for Christmas giving.

A portion of the profits will be donated to a local women's charity. To order, email Donna Glenen-Cruikshank (donnalynnsgarden@yahoo.com) or Chris Dorn (chris6375783@outlook.com).

Look for signs with the red bird!

MAPS FOR

Artisan Studios

- 1. Brigg's Maple
391 Coverdale Rd.
- 2. Glass Roots Gallery
406 Coverdale Rd
- 13. Wendy Johnston Pottery
3923 Route 114, Hopewell Cape
- 16. Farm Life Studio
474 Albert Mines Road
- 17. Tansy Lane Herb Farm
490 Albert Mines Road
- 18. Albert County Clay Co.
900 Albert Mines Road
- 21. Studio on the Marsh
255 Mary's Point Rd, Harvey-off Rte 915
- 22. Waterside Winery
2008 Rte 915, Waterside
- 23. Brian Townsend
3586 Route 915, Alma
- 25. Buddha Bear Café
8576 Main St. Alma

Markets, Museums, & Events

- 5. Foods of the Fundy Valley Market
371 Osborne Corner Road.
- 6. Old Church Farmer's Market
2807 Main St, Hillsborough
- 11. The New Brunswick Railway Museum
2847 Main Street, Hillsborough
- 14. Albert Co. Museum and Gift Shop
3940 Route 114, Hopewell Cape.
- 19. Broadleaf Guest Ranch
5526 Rte 114, Hopewell Hill.

Gifts & Antiques

- 3. Relaxing River, Aesthetics & Spa
1177 Route 114
- 4. Angel Mist Treasures & Antiques
2056 Rte 114
- 15. The Pink Church Boutique
3990 Route 114, Hopewell Cape
- 26. The Outpost
Main St. Alma. Between Post Office & Boathouse.

Convenience Stores

- 10. Ford's Pharmacy
2838 Main St. Hillsborough
- 12. Cookes Quik Mart
2995 Main St. Hillsborough
- 20. Crooked Creek Convenience
5702 King St. Riverside Albert
- 27. Fundy General Store
8604 Main St. Alma

Restaurants & Food Venues

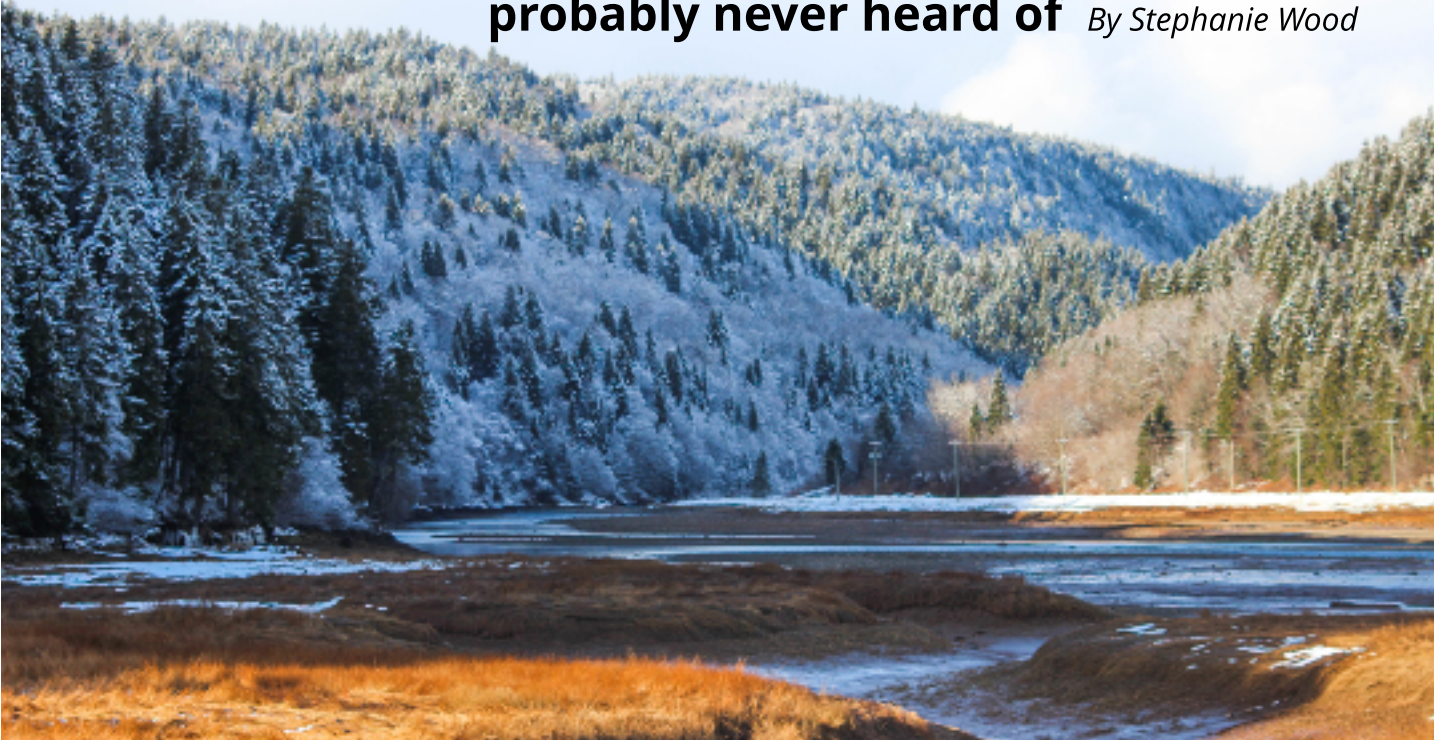
- 7. Oliver's German Bakery
2807 Main St.-Hillsborough
- 8. Rocco's Cucina
2814 Main St-Hillsborough
- 9. Cinnamon Soul Café
2831 Main Street, Hillsborough
- 24. Soprano's Pizza
8553 Main St. Alma
- 28. Tippy Tales Restaurant
8607 Main St. Alma



Christmas in the Country gratefully acknowledges the sponsorship of the
Albert County Tourism Association.

Blue carbon: the climate change solution you've probably never heard of

By Stephanie Wood



This article is reprinted with permission from The Narwhal.

Gail Chmura, a professor at McGill University, had recently joined the school's geography department in the late 1990s when some of her colleagues were trying to solve a mystery. They were looking at global carbon budgets, and the numbers weren't adding up. There was a missing carbon sink, sequestering a whole lot of carbon, and nobody knew what it was. They wondered if Canada's peatlands were part of the missing sink.

Meanwhile, Chmura was sampling salt marshes in the Bay of Fundy, which spans between New Brunswick and Nova Scotia. Few people had paid salt marshes any attention as carbon sinks because the data showed pretty low levels of carbon at first glance. But Chmura had a lightbulb moment.

Researchers had been looking at the percentage of carbon in salt marshes by weight. In peatlands, this makes sense because they are almost entirely made of organic matter, which is where carbon is stored in soil. But salt marshes contain a lot of clay and silt, which are much heavier than organic matter — what if the heavy clay and silt had made the amount of carbon look deceptively low?

She adjusted her measurements to be based on the actual weight of carbon contained in the soil rather than on the percentage of weight and was struck by her findings: salt marshes stored lots of carbon. They could even store more than peatlands.

"I didn't think anyone was going to believe me," she said with a laugh.

But she was right. Over her years of researching the Bay of Fundy, she found the bay's salt marshes contain more than 14.2 million tonnes of organic carbon, which it has been accumulating for 3,000 years. That's equivalent to emissions from over 106 million barrels of oil being consumed.

The carbon stored in ocean and coastal ecosystems like marshes, seagrasses and mangroves was dubbed "blue carbon" by environmental non-governmental organizations in 2009, and Chmura has gained a reputation as a blue carbon expert.

The ocean's vegetated habitats (like mangroves and salt marshes) cover less than two per cent of the ocean floor, but they hold over half of the carbon stored in ocean sediments. A 2009 report, *Blue Carbon: The Role of Healthy Oceans in Binding Carbon*, estimated preserving and recovering these ecosystems could offset three to seven per cent of global fossil fuel emissions over the course of two decades.

Instead, like so many ecosystems *The Narwhal* has explored in the Carbon Cache series, coastal ecosystems have continued to be desecrated over time. Wetlands are threatened by rising sea levels, warmer oceans, erosion and pollution. The Blue Carbon Initiative estimates 340,000 to 980,000 hectares of blue carbon ecosystems are destroyed each year, releasing their stored carbon into the atmosphere.

The Bay of Fundy, where Chmura focuses much of her research, has lost about 85 percent of its salt marshes due to development, including the construction of dikes. The bay is considered one of the seven wonders of North America and sees the highest tides in the world. The average tidal range around the world is about one metre, but the Bay of Fundy's range can reach up to 16 metres. The bay floods with 160 billion tonnes of sea water twice a day.

Despite its degradation, Chmura says the Bay of Fundy is exceptionally well-situated to withstand climate change. The bay and the St. Lawrence River, which is also abundant with wetlands, are more resilient to sea level rise since they already experience such high tides.

"These northern marshes may be the future of salt marshes because [marshes] are highly threatened in the United States to the south," Chmura said. . . .

#

Chmura and her students are working to establish parameters to accurately estimate carbon stocks. She hopes this will eventually enable landowners that preserve wetlands to sell offset credits on the carbon market, which she says offers a lot of opportunity for farmers.

For example, Chmura co-authored a study that found a salt marsh on the St. Lawrence River continued to store carbon at the same rate when it was grazed by sheep. Not only that, salt marsh lamb — l'agneau de pré-salé — is a highly sought-after meal in Europe.

"It's supposed to be very tasty," she said.

One day soon, Chmura said, perhaps farmers could raise



Image on p. 4 by Kat Hallett. Above by Kevin Snair of www.creativeimagery.ca.

sheep on salt marshes and earn income from selling meat in addition to carbon credits, once they can prove how much carbon is still being sequestered. Chmura believes there are opportunities for ecotourism, as well.

"You can have your marsh and eat it too," she said.


On a national scale, the federal government is also in the midst of developing its own carbon offset standard, which will set the parameters for a variety of carbon credits.



CROOKED CREEK

CONVENIENCE

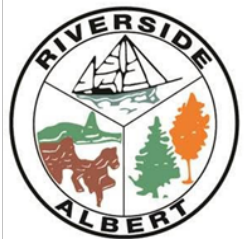
NB Liquor Agency & Gas
Coffee, Groceries, Gas, Gluten-free food
Produce, Lotto tickets **882-2918**



2849 Main St Unit 1 Hillsborough NB E4H 2X7
www.villageofhillsborough.ca

Village of Hillsborough

Tel: (506) 734-3735 Email: hillsboroughnb@rogers.com
 Fax: (506) 734-3711



5823 King St., Riverside-Albert
 NB E4H 4B4

**Village of
 Riverside-Albert**
Fundy Historic Village

506-882-3022 www.riverside-albert.ca
villra@nbnet.nb.ca

In the face of climate change, restoring salt marshes may in fact be one of the best ways to protect agricultural land by creating a buffer zone. Many of the Bay of Fundy's salt marshes disappeared due to dikes being built so that the nutrient-rich soil could be used for agriculture. But as sea level rises and dikes erode, those lands are now at high risk of flooding.

"It's about building smarter and working with nature and building up natural processes."

Danika van Proosdij, a professor in the department of geography and environmental studies at Saint Mary's University in Halifax, was lead author of a study that found 70 percent of dikes in the Bay of Fundy were highly vulnerable to overflowing by 2050.

With funding from Fisheries and Oceans Canada's coastal restoration fund, van Proosdij has been leading efforts to strategically reflood areas the Nova Scotia Department of Agriculture has identified as being cut off from tidal flows due to dikes and at risk of being flooded anyway. Instead of building the dikes up higher, reflooding restores salt marsh habitat.

The change can be quick. Her team reintroduced tidal flow at one site in the Bay of Fundy in 2018, and salt marsh plants and shore birds have already returned to the area.

Re-introducing these marshes creates a buffer that can absorb water, decrease wave intensity and provide more space between the dike and land that's being used for other purposes like agriculture. It also gives people like van Proosdij the opportunity to measure how much carbon is stored in the marshes and how that changes as they evolve and grow.

"We're definitely not taking down all dikes in the Bay of Fundy to reflood the land," she said. "We're strategically re-aligning in certain areas to make the land more resilient to withstand climate change impacts by creating a buffer in front of the dike."

Community Market
Fresh & Local
Produce - Meats - Cheeses
Farm Fresh Eggs - Baked Goods
Soup - Preserves & much more...

A consignment market for local food producers
at the Artisan's Village, Main Street, Hillsborough
Open 7 days, 10am to 6pm through October 2020
Foods of the Fundy Valley
www.facebook.com/FoodsOfTheFundyValley/
foodsofthefundyvalley@gmail.com

An excerpt from "Blue carbon: the climate change solution you've probably never heard of" by Stephanie Wood, published by The Narwhal, Sept. 30, 2020 and reprinted with permission.

Read the whole article at thenarwhal.ca/blue-carbon-climate-change-canada. This is the eighth part of an ongoing series about nature-based climate solutions in The Narwhal.

The Old Church Farmers' Market
2807 Main Street, Hillsborough
Saturdays 9am to 2pm

Please come to **The Old Church Farmers' Market** for Oliver's German Bakery, AnC Meats, Fundy Farms foods, Community Table products, Jems preserves, home baking, arts, crafts, music and a COVIDly-responsible good time!

Wouldn't it be nice if your home was actually *your* home.

From paying off your mortgage faster to planning for the future, we have the financial advice you need.

CREDIT UNION
OMISTA

www.OMISTA.com
506-878-5421
Hillsborough@OMISTA.com

Albert County Historical Society Presents Lifetime Membership to Beulah Morrissey

By Dawne McLean

It was an honour for the Albert County Historical Society at the 2020 AGM to present a Lifetime Membership to Beulah Morrissey of Riverside-Albert in recognition of her passionate dedication in sharing the rich heritage of her community and of Albert County.

As a well-known and respected local historian, Beulah has contributed greatly to helping people of all ages gain a greater understanding and appreciation of the proud heritage of their community.

Over the years, Beulah has been instrumental in organizing many community heritage projects, events and celebrations, such as establishing the War Memorial in McClelan Park in Riverside-Albert, the re-enactment of the official opening of the Riverside Consolidated School, the 75th Anniversary celebration of Riverside Consolidated School in 1980, Riverside-Albert Pioneer Days, Riverside-Albert Winter Carnival and Shepody River Days. For years, Beulah has made history come alive for students through community activities and classroom visits.

Beulah is forever organizing new creative projects to bring the community together. Last December, the new "Christmas Tree Village" event turned the Riverside-Albert Recreation Centre into a winter wonderland where community organizations had created amazing displays by decorating trees with different themes. The event was a special time for the community. Neighbours and friends gathered to chat over hot chocolate and gingerbread cookies, enjoying the magical room of glistening trees, while sharing past Christmas memories and heritage stories.

Beulah truly has a heart for heritage and her community. Beulah, we thank you!

Dawne McLean is the President of the Albert County Historical Society.

Sign up to receive our monthly publication by email at ConnectingAlbertCounty.org/e-magazine.

ALBERT
COUNTY
PHARMACY

Guardian

Feeling Better Starts Here

Save Smart, Shop Local.



Merry Christmas from everyone at Albert County Pharmacy!

We hope your holidays will be filled with joy and laughter & wish you happiness in the New Year!



Albert County Pharmacy

Store Hours:

Monday-Friday
9am-6pm

Saturdays:

closed until further notice

Pharmacist on

Duty:

Monday-Friday
9:30am-6pm

Check out our monthly flyer on our Facebook page! facebook.com/AlbertCountyPharmacy

ALBERT COUNTY PHARMACY
5883 King Street, Riverside-Albert, NB, E4H 4B5
Ph: (506) 882-2226 Fax: (506) 882-2101

www.ConnectingAlbertCounty.org ~ 7

Best Practices to make your Live Stream Event a Success *By Lynn Colepaugh*

Live streaming is a great way to open up your events to the whole of Albert County and beyond while maintaining COVID restrictions. It is growing in popularity and provides great entertainment value for customers who may be staying at home and unable to engage with your business during our current situation. If you are looking to promote your business through a live event, such as a concert, business celebration or webinar, here are some practices you should implement to make your live stream a success for you and your audience.

Before the show

- **Plan diligently** – it may seem like it doesn't need to be said, but you would be amazed at how often people don't plan their content sufficiently. Have an agenda, know what points to hit, and have ideas to fill dead time if things don't go to plan.
- **Do a test run** – depending on your stream, this may be as simple as checking your sound setup, camera and a quick practice of the material, but it is even more crucial to institute a test run policy if you will be handing off to other people or jumping between live and pre-recorded content. Make sure it's not just working for you – your live stream should be smooth whether someone is on a laptop, mobile phone or tablet.
- **Let people know** – you cannot just announce a live stream and expect people to attend. Depending on the event, start promoting it on your social channels (and possibly your website) 1-2 weeks before the event. Tell people when and where and why they should attend!

On the day of the show

- **Start early** – just like an in-person event, some people will turn up late and some will turn up early. If early potential viewers can't get in, they may lose interest and leave so ensure your stream starts 15 minutes before, even if you just play a pre-recorded asset in the lead-up.
- **Be mindful of the fashionably late** – in the first half-hour, be mindful that people may still be coming in. At

sensible intervals, acknowledge them by saying something along the lines of "If you're just joining us, we have already covered XXX and are now moving on to XXXX."

- **Engage with your audience** – make sure you don't just read your script to the camera, ignoring your audience. Have someone else involved who will read the constant stream of viewer feedback and let you know what you need to know. Don't try to do this yourself or it will pull your focus and lead to a poor viewer experience. Someone should filter the comments down to the essentials, letting you respond to important questions, acknowledge specific comments, or change the next segment accordingly.
- **End with a CTA** – a CTA (call to action) is an essential part of your sign-off. After all, you created your live stream for a purpose. Make sure people are clear on a single thing they should do, whether that is joining a newsletter, posting about the event on social media, or getting more information from the website.

Continued on next page.



East Coast Kids
Child Care & Learning Centre

Play
Laugh
Learn

Safe & fun environments that offer quality care & programs/activities for children ages 2-12 yrs.

Licensed Centres in Hillsborough & Riverside-Albert

childcare@eastcoastkids.ca 506-962-5868



LOOKING FOR A NEW ADVENTURE IN BUSINESS

Come & meet our team to discuss our programs

<p>Loan Programs:</p> <ul style="list-style-type: none"> - CBDC Youth Loan - CBDC First-Time Entrepreneur Loan - CBDC General Business Loan - CBDC Innovation Loan - CBDC Social Enterprise Loan 	<p>Also offering other programs:</p> <ul style="list-style-type: none"> - The Self-Employment Benefit Program (SEB) - Business Development Seminars (BDS)
--	--



Community Business Development Corporation
Corporation de développement communautaire
Westward/Albert

337, rue Main Street, Shediac, NB E4P 2B1
506-532-8312 • Toll Free 1-800-925-6677 • www.cbdc.ca

After your live stream

- **Analyze** – a live stream event can give you a vast amount of data. Analyze who came, look at whether they were existing customers, check who followed through on the CTA, and use this information to build better, more effective live streams in the future.
- **Acknowledge your audience** – if your event was a one-off event, make sure to thank people for their attendance. You can do so across your social platforms, your email newsletter, or on the event page of your website.
- **Stay in touch** – if you connected with people during the stream, or if they reach out to you, do your utmost to communicate in a timely and professional manner. Live streams help you build valuable relationships, but it is up to you to follow through.

We hope these tips will help make your live stream a success for all involved.

CCLC is a live stream producer comprised of Chris Colepaugh, renowned local music artist and technician, and Lynn Colepaugh, digital marketing powerhouse and owner of CyberPR Army. If you would like to talk to us about live stream packages, please contact us (admin@cclcproductions.com) or visit cclcproductions.com for details.



...promoting economic and commercial prosperity in Albert County.

Contact us today to find out the full range of benefits & services we have to offer you & your business.

www.albertcountychamber.com
accofc@gmail.com
P.O. Box 3051, Hillsborough
NB. E4H 4W5

Foods of the Fundy Valley Food Forest *By Lynne Greenblatt*

The Foods of the Fundy Valley (FFV) food forest in Hillsborough is growing! Located on Steeves Street on the south side of the Railway Museum, the orchard was established in the fall of 2018 with a grant from Tree Canada. FFV planted two dozen trees including varieties of apples, cherries, plums and pears. This fall, we added eight high-bush blueberry plants. Plans are to add more fruit plants next spring with the school community (Hillsborough Elementary, Caledonia Regional High and Riverside Consolidated Schools). Our vision for this property is an orchard of edible fruit that members of the community can enjoy. The FFV BeeWise group also installed a working beehive nearby as an educational tool. The Pollinator Garden was planted by FFV, Friends of Fundy and Fundy National Park.

www.facebook.com/FoodsOfTheFundyValley, foodsofthefundyvalley.ca



Albert County Winter Carnival Donation *By Don Coleman*

The Albert County Winter Carnival has donated two limestone benches to the Village of Hillsborough. Winter Carnival founder Don Coleman says, "Thanks to all of our sponsors, these benches have created a special legacy for the citizens of Hillsborough." Surplus donations from the Albert County Winter Carnival sponsors were used to purchase and engrave the benches, which are in Peace Park on Main Street. Two Hillsborough-area businesses, Brunswick Limestone and Maritime Monument Works, provided the benches and engraving.

The remainder of the sponsors' funds (\$550) is being donated to the Caledonia Regional High School Valedictorian of 2020-2021 in the form of a bursary to help that exemplary student continue on his or her path of success.

Coleman expresses a very special thank you to past sponsors: Green Coast Energy, Cinnamon Soul Café, Down East Coffee, Tidewater Wellness Centre, Hillsborough Service Centre, Beechill Autobody, Fireside Home Heating, Hillsborough Golf Club, Omista Credit Union, Kent, Jeff MacDougall (South Eastern Mutual), Cooke's Quik Mart, Albert County Hardware, Pro-Post, Leslie Tracy, Brunswick Limestone, Crooked Creek Convenience, Fresh Mart, Gary Steeves Insurance, CR Yardworks & Equipment, All-Ways Doors, Longhorn Transportation and Baxter Dairy. *(Photo by Don Coleman.)*



Hillsborough Public Library

The Hillsborough Public Library offers Curbside Pick-up service.

1. Contact the library to select titles or to let us know what you like so we can select books for you.
2. Reserve a time to come pick up the items.
3. Ring the exterior doorbell when you arrive. A library employee will bring items out to you.
4. Read, enjoy, repeat!

Hillsborough Public Library

2849 Main St., Hillsborough, 734-3722

Curbside Pick-Up:
Tuesday-Saturday 10am-12pm

Open to the Public:
Tuesday-Saturday 1pm- 4pm

We encourage you to use our online services at www.gnb.ca/publiclibraries.

Contributed by Victoria Stroud-Arsenault

BENNETT AND ALBERT COUNTY HEALTH CARE (BACH) FOUNDATION

The Bennett and Albert County Health Care (BACH) Foundation helps create a healthy, vibrant community. The BACH Foundation improves access to health care services in rural Albert County and supports programs that improve community health.

The BACH Foundation supports: Albert County Community Health Centre & satellite clinic in Hillsborough;

- Tele-Drive Albert County;
- Little Rocks Curling;
- School Spin Bikes;
- Connecting Albert County;
- Tele-Health;
- Forest Dale Home Van;
- Literacy Express;
- Sistema Hillsborough;
- Imagination Library;
- and much more.

By donating to the Bennett and Albert County Health Care Foundation, you are investing in a healthier community.

bachfoundation@horizonnb.ca, 882-3100
bachfoundation.com



Community Calendar

Wednesday, November 25

Mobile Enviro-Depot-Hillsborough. Noon-8pm. Kiwanis parking lot. Details on page 13.

Thursday, November 26

Mobile Enviro-Depot-Hillsborough. Noon-8pm. Kiwanis parking lot. Details on page 13.

Saturday, November 28

Christmas Market at The Old Church Farmers' Market. 10am-5pm. Hillsborough. See page 2.

19th Annual Christmas in the Country. 10am-5pm. Tour of artisan studios, farmers' markets, museums and more. For information contact: Ruth Bradford at (506) 734-3493 or ruthbradford@xplornet.com. See pages 1 and 3.

Sunday, November 29

Christmas at The Old Church Farmers' Market. 11am-4pm. Hillsborough. See page 2.

Christmas in the Country. 11am-4pm. See Nov. 28th.

Friday, December 4

Crossroads for Women. 9am-3pm at Albert County Community Health Centre (lower entrance). Support for victims of domestic violence. For an appointment, call/text Melissa: 506-381-8808, melissab@crossroadsforwomen.ca. See connectingalbertcounty.org/wellness/help-for-people-facing-domestic-violence.

Saturday, December 5

Christmas at The Old Church Farmers' Market. 10am-5pm. Hillsborough. See page 2.

Christmas in the Country. 10am-5pm. See Nov. 28th.

Harvey Hall Company 2nd Annual General Meeting.

11am. Riverside Albert Recreation Centre (lower level). Open to the public. Pandemic safety measures will apply. Bring your own mask.

Sunday, December 6

Annual Christmas Market - The Old Church Farmers' Market. 11am-24pm. Hillsborough. See page 2.

Christmas in the Country. 11am-4pm. See Nov. 28th.

An Afternoon Before the Holidays with Sticky Bones Lee.

Doors open at 2pm at the Parkindale Hall, Parkindale. Folk music starts at 2:30. Social distancing, bring your own mask. BYOB. Reserve space by sending message to facebook.com/events/702252910703010.

Monday to Wednesday, December 28-30

Photo Show: Albert County 175 Finale Event. Showcase of photos taken by residents of Albert County showing life from 1845 to 2020. Participate by sending your photos from years past and your love for our community today! See details on page 12, or see AC175.ca, [Facebook/albert-countymuseum](https://facebook.com/albert-countymuseum), call 734-2003 or email ac175@albertcountymuseum.com.

Check out our online calendar at ConnectingAlbertCounty.org/Calendar.

Feel free to add community events to the calendar.

Yes, I want to help
have a positive impact on health and wellness for the people served by the Albert County Health and Wellness Centre

I would like to contribute a monthly amount of \$ _____ TO BE DEDUCTED ON: 1st or 15th of the month
I would like to contribute a one-time gift of \$ _____

Name: _____ Telephone: _____
Address: _____
City/Town: _____ Province: _____ Postal Code: _____
E-mail: _____

I have enclosed a cheque made payable to the Bennett and Albert County Health Care Foundation

I prefer to use my: VISA MasterCard

Card Number: _____
Expiry Date (month/year): _____
Signature: _____

Charitable Registration: 869019133 RR0001

Bennett and Albert County Health Care Foundation
8 Forestdale Road, Riverside-Albert, NB E4H 3Y7
Tel 506-882-3100 Fax: 506-882-3101
Donate online at www.bachfoundation.com



Celebrate 175 Years of the Land, the Sea & the People of Albert County

Over the course of 2020, we are telling the stories of every community in Albert County, which includes River-view and hugs the shores of the Petitcodiac River to the Bay of Fundy. Albert County features some of the most iconic treasures in New Brunswick, such as the beautiful Fundy National Park, Hopewell Rocks, Cape Enrage, and inland areas stretching beyond Caledonia Mountain in all directions. This celebration is presented by the Albert County Historical Society, Government of Canada, Province of New Brunswick and Hopewell Rocks.

Digital means of storytelling will be used, including "Photo-A-Day," an AC175 Podcast, "Home Schooling" history reading lessons, social media platforms and videos. We are also working with publications, such as *Connecting Albert County* and other media outlets including tv, radio, newspapers and magazines, bringing the story of Albert County to you!

You may have received the special Albert County 175 Souvenir Booklet in your mailbox! We sent copies to every household in Albert County, all 15,000 of them according to Canada Post! An additional 5,000 copies were printed and extra copies are available at the Albert County Museum (by donation). If you did not receive a copy or have a request for several copies for your community group, school or business, please let us know and we will make arrangements to provide copies. Call us during business hours at 734-2003.

Albert County 175 Collectors Pins! Only 500 will be available. These are made in New Brunswick by Aitkens Pewter! Priced at only \$25, you will receive a one-of-a-kind lapel pin featuring the beautiful AC175 logo, a membership to the Albert County Historical Society, a season's pass to the Albert County Museum for both the 2020 and 2021 seasons, a copy of the Souvenir Magazine and an entry into the draw for the Albert County Prize Package. The proceeds go towards supporting the work of the Historical Society and AC175 programming. Purchase yours while supplies last at albertcountymuseum.com/AC175Pin.

Enter to win at AC175.ca! We are drawing for an Albert County Prize Package! There are three ways to enter:

- 1) Visit our website and fill out a prize ballot.
- 2) Enter a photo or story, and your name will go into the draw.
- 3) Visit the Albert County Museum and a prize ballot will be given for every paid admission.



Albert County 175 Events

December 28-30 - **Photo Show AC175 Finale Event.** A showcase of photos taken by residents of Albert County showcasing life from 1845 to 2020. Participate by sending your photos from years past and your love for our community today! The photos will be collected and added to the Albert County Museum's permanent collection. The Photo Show will feature some of the best entries; prizes will be awarded in three categories: Historic, Albert County Today, and Youth Photos (18 and under). What a great way to celebrate the year!

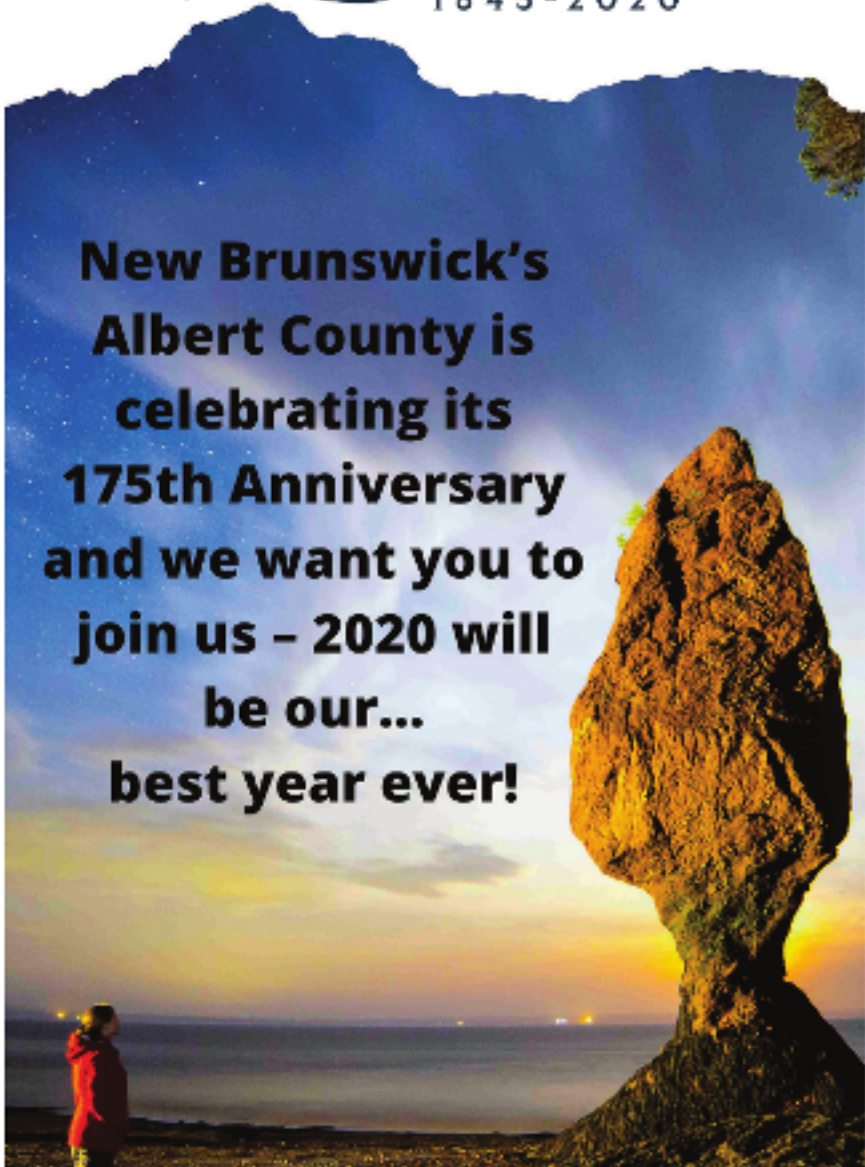
AC175 Barn Quilt - In honour of the Annual Quilt Show & Sale and the Barn Quilt Trail that we will be working on in the coming years, we have designed and painted a special AC175 Barn Quilt. Visit the Albert County Museum to see the beautiful barn quilt featuring the iconic scenes of our county!

The Albert County 175 celebration is presented by the Albert County Historical Society and is supported by the Governments of Canada and New Brunswick, Hopewell Rocks, Albert County Tourism Association, Albert County Chamber of Commerce, Friends of Fundy, Bayview Chalets & Motel, Connecting Albert County, Ponderosa Pines Campground, Town of Riverview, Villages of Hillsborough, Alma and Riverside-Albert, and Broadleaf Guest Ranch.

Learn more at AC175.ca, [Facebook/albertcountymuseum](https://www.facebook.com/albertcountymuseum), call 734-2003 or email ac175@albertcountymuseum.com.



**New Brunswick's
Albert County is
celebrating its
175th Anniversary
and we want you to
join us – 2020 will
be our...
best year ever!**



Presented by



Supported by



Mobile Enviro Depot

Residents of Westmorland and Albert Counties are welcome at any Mobile Eco-Depot event, not just the one closest to them or in their community. In rural Albert County, the depot rotates between Alma, Riverside-Albert and Hillsborough. **From noon to 8pm.**

What can you drop off?

For no fee, residents will be able to visit any Mobile Eco-Depot to dispose of the following (up to a ½ tonne truck and utility trailer load):

- Appliances (limit of 1/type): Fridge, stove, freezer, dryer, BBQ, etc.
- Electronic Waste: TVs, computer monitors, hard drives, DVD players, gaming consoles, etc.
- Furniture
- Small Household Machinery (must be emptied of gas and oil)
- Construction, Demolition and Renovation Waste
- Household Hazardous Waste: Batteries, aerosols, paint, light bulbs, fertilizers, chemicals, CFL bulbs, propane tanks, etc.
- Car/truck tires (maximum of 20" diameter, limit 8/person)
- Brush, branches, yard waste
- Ashes
- Glass
- Cardboard and paper
- Cooking oil
- Metal

*No car parts, gas tanks, residential oil tanks, regular curbside waste or commercial waste

Service is for residential customers only. Commercial waste or regular curbside household waste will not be accepted. Residents are asked to sort and separate their loads by material type. Details: www.eco360.ca/mobile-eco-depot-program

Supporters of Connecting Albert County

Connecting Albert County would like to thank the following advertisers and donors.

Platinum

Bennett and Albert County Health Care (BACH) Foundation bachfoundation.com

Albert County Pharmacy [Facebook.com/AlbertCountyPharmacy](https://www.facebook.com/AlbertCountyPharmacy)

Friends of Fundy [Facebook.com/FundyFriends](https://www.facebook.com/FundyFriends)

Hon. Rob Moore, MP for Fundy Royal RobMoore.ca

Gold

Albert County 175 AC175.net

CBDC Westmorland Albert www.CBDC.ca

OMISTA Credit Union OMISTA.ca

Silver

Albert County Chamber of Commerce albertcountychamber.com

Broadleaf Ranch broadleafranch.ca

Cape Enrage Fundy Log Cabin fundycottage.com

Crooked Creek Convenience [Facebook.com/ccconvenience](https://www.facebook.com/ccconvenience)

East Coast Kids Child Care & Learning Centre eastcoastkids.ca

Foods of the Fundy Valley [facebook.com/FoodsOfTheFundyValley](https://www.facebook.com/FoodsOfTheFundyValley)

Mike's Bike Shop mikesbikeshop.ca

The Old Church Farmers' Market [Facebook.com/The-Old-Church-Farmers-Market-110454250674986](https://www.facebook.com/The-Old-Church-Farmers-Market-110454250674986)

Village of Hillsborough villageofhillsborough.ca

Village of Riverside-Albert riverside-albert.ca

The Garden Guy (Micheal McBurnie) [Facebook.com/thegardenguymicheal](https://www.facebook.com/thegardenguymicheal)

Bronze

Chipoudy Communities Revitalization Committee [Facebook.com/communityrevitalization](https://www.facebook.com/communityrevitalization)

Falcon Ridge Inn B&B www.falconridgeinn.nb.ca

Fundy Highlands Motel and Chalets www.fundyhighlandchalets.com

Hillsborough Baptist Church hillsboroughbaptist.org

Jeff MacDougall, SouthEastern Mutual Insurance jeff.macdougall@semutual.nb.ca

Village of Alma villageofalma.ca

For six years, Connecting Albert County has provided our community with information on people, places and events in rural Albert County. Every month, hundreds of people read our publication. The electronic issue is emailed to 550+ subscribers and many others read the issue online. Hundreds of free print copies are distributed each month throughout rural Albert County. Once a year, we mail an issue to 2300 homes from Stoney Creek to Alma, and to Parkindale and Elgin.

To volunteer, contribute a story or find out more, email info@ConnectingAlbertCounty.org. To find out more about ads or donations to support our work, visit ConnectingAlbertCounty.org.

For details, please email info@ConnectingAlbertCounty.org or mail CAC, 8 Forestdale Road, Riverside-Albert, NB E4H 3Y7.

We hope you will consider supporting Connecting Albert County.

www.ConnectingAlbertCounty.org ~ 14