

# Connecting Albert County

## September 2020

FREE PUBLICATION

### Cape Enrage: From forest to fossil *By Janet Wallace*

Imagine you're at the beach at Cape Enrage. Now, time rolls back 320 million years. There is no Bay of Fundy. Instead, you're in a forest. Plants like gigantic horsetails and club moss tower overhead. You feel the rush of air as a giant dragonfly zips by. A three-foot long millipede-like creature slithers past you. The moment when the millipede-like creature walked on wet mud has been frozen in time.



In early August, tracks of several creatures were found on the Cape Enrage beach by New Brunswick Museum scientists Matthew Stimson, Assistant Curator of Paleontology, and Olivia King, Research Associate. The animals, which date back to the Carboniferous Period, the "Coal Age," include a salamander-like creature, giant millipedes and relatives of the modern-day horseshoe crab.

The fossils from Cape Enrage are now on their way to the New Brunswick Museum in Saint John. Some may eventually be returned to the site and become incorporated into a new display about fossils and the geological history of the area.

Cape Enrage is closed to visitors for 2020 but work continues on the site. The lighthouse is being re-shingled and the boardwalk being replaced. The dream, says Jim Campbell, the Manager of Cape Enrage, is to create an interpretive centre at the site featuring the history of the area, as well as its flora, fauna and fossils.

Note: It is prohibited to collect fossils without a permit. However, if you do spot a fossil, take a picture of it and the surrounding rocks, record the GPS coordinates, and contact either the New Brunswick Museum or Sylvie Migneault, Assistant Manager of Cape Enrage. The New Brunswick Museum staff appreciate the work of fossil finders and will give them credit for their finds.

*Images by Olivia King. Top: Cape Enrage cliffs; left: tracks of a giant millipede; below: fern; below right: Sylvie Migneault and Matthew Stimson.*



#### Inside:

- Cape Enrage fossils~1
- Health Care Centre update~2
- Old Church Farmers' Market~2
- From field to flour to bread: Oliver's German Bakery~3
- 10 years of Foods of the Fundy Valley~4
- Anniversary of Riverside Consolidated School~5
- Recipes for pickles and relish~6
- Community calendar~7
- Alma's sticky buns~8
- Albert County 175~9
- Hillsborough Library~11
- BACH Foundation~12
- Volunteer at Connecting Albert County (CAC)~13
- CAC Supporters~14

## Connecting Albert County

September 2020  
Vol. 6, No. 9  
ISSN 2369-1174/1182 (digital)

### Our Mission:

Building connections and fostering pride of place and culture in rural Albert County by publishing in print & online. Connecting Albert County Inc. is a registered non-profit organization.

### Connecting Albert County Board of Directors:

Heather Alward, Ronda Fraser, Joseph Gallant, Shannon Gaythorpe, Karen Lindsay & Victoria Stroud-Arsenault

### CAC part-time coordinator/ editor: Janet Wallace

**Contributors:** Kim Beers, Kris Buck, Hanna Downey, Lynne Greenblatt, Elaine Holmstrom, Phyllis Hudson, Ken Kelly, Olivia King, Jim Kitts, Stuart Liptay, Dawne (Wright) McLean, Victoria Stroud-Arsenault, Janet Wallace

To volunteer with CAC, advertise, submit articles or letters, email [info@](mailto:info@connectingalbertcounty.org)

**ConnectingAlbertCounty.org** or mail CAC, 8 Forestdale Road Riverside-Albert, NB E4H 3Y7

Letters and articles may be edited. Statements in our publication and website do not necessarily reflect the views and opinions of Connecting Albert County's volunteers and staff.

Subscribe to our free monthly e-publication (and see past issues) at [www.ConnectingAlbertCounty.org/e-magazine](http://www.ConnectingAlbertCounty.org/e-magazine)

Like us at [www.facebook.com/ConnectingAlbertCounty](https://www.facebook.com/ConnectingAlbertCounty)

## Albert County Community Health Centre Update

In compliance with Public Health restrictions due to the COVID-19 pandemic, **appointments are required for all visits.**

**Lab and specimen collection** services at Horizon's Albert County Community Health Centre in Riverside-Albert are by appointment only from 8:00-11:30am Monday through Thursday. Call 882-3100 to book an appointment.

**Lab and specimen collection** services at Horizon's Hillsborough Satellite Office, 2807 Main Street, Hillsborough, are by appointment only from 8:30-11:30am every Tuesday and Thursday. Call 882-3100 to book an appointment.

All **nursing services** such as: dressing changes, suture / staple removal, IV antibiotics, injections, ECG's, Holter Monitoring, 24-hr Blood Pressure Monitoring, etc., are by appointment only. Have your Health Care Provider fax a requisition to the Albert County Community Health Centre @ 882-3101.

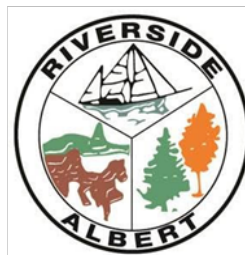
Appointments with our Health care providers may be in-person, virtually or by phone. If you are scheduled for an appointment at the Health Centre, please arrive no earlier than 15 minutes prior to your appointment. Wear a community mask if you have one. COVID-19 screening questions will be asked upon your arrival at the front entrance.

Other services such as X-ray and Physiotherapy have resumed by appointment only. Please call the Health Centre if you have any questions or concerns.

### Keep safe!

**Albert County Community Health Centre (882-3100)**

*Contributed by Phyllis Hudson, Facility Administrator, Albert County Community Health Centre.*



5823 King St., Riverside-Albert  
NB E4H 4B4

Village of  
**Riverside-Albert**  
Fundy Historic Village

506-882-3022

[villra@nbnet.nb.ca](mailto:villra@nbnet.nb.ca)

[www.riverside-albert.ca](http://www.riverside-albert.ca)

## Old Church Farmers' Market in Hillsborough

At the Old Church Farmers' Market, the vendors are enjoying the late summer influx of visitors. There are so many new faces this year, both from the community and from not so far away. But the real news is we are seeing the first early-bird Christmas shoppers! They say they want to avoid future crowds and get the first crack at gift selections.

Some vendors are starting (with hesitation) to build stock for Christmas in the Country, hoping it can happen. We don't know what it will look like yet, but we hope to be there... with bells on.

Come out, shop local, minimize your food miles, and don't forget your reusable shopping bags. See you at the market! *Contributed by Jim Kitts.*

**The Old Church Farmers' Market: Saturdays from 9am to 2pm**

2807 Main St., Hillsborough

[www.facebook.com/The-Old-Church-Farmers-Market-110454250674986/](https://www.facebook.com/The-Old-Church-Farmers-Market-110454250674986/)

# From Field to Flour to Bread

One of the most evocative sentences in the English language is "Give us this day our daily bread." This line from a prayer (in French) may have been on Pierre Thibodeau's mind in 1700 when he bought a grindstone in Boston. He then built a grist mill around the grindstone in Shepody, the village he founded in 1698.

The grindstone, now on display in the Albert County Museum, must have played an important role in feeding the people living on the shore of the Petitcodiac River. Although those folks were forcibly deported during the British/French Seven Years' War, their descendants are all around us. They are forever linked to this grindstone and "Chipody" (another spelling of Shepody or Chipoudie).

Other grindstones have been used in the area since then, but they were long gone by my time. But now, at Oliver's German Bakery in Hillsborough, Oliver Hofer has a new flour-grinding apparatus. Ironically, the machine was brought over from France; Pierre would be pleased. He would be even more pleased to know that Shepody-grown grain from Oliver's fields runs through the veins of the machine. The flour is used in Oliver's sourdough bread and many other delectable treats. The winnowed bran is fed to the cows that graze on the ancient marsh. The cattle, which are butchered and sold locally, feed our people.

Now get a cup of tea and sit back with Pierre Thibodeau to consider what this means. Those usual suspects 'down country,' the ones with the tractors on the road...they are trying to feed us and generate economic activity *if we let them*. For example, Oliver is 'sprouting' a local flour operation and Angela MacDougall of Fundy Farms: Local Harvest in Edgetts Landing is opening a vegetable stand beside Oliver at the Dieppe Market. Angela also buys vegetables from local growers to sell at her farmstand.

All this tea and toast talk gets me in the mood for an Oliver snack. What will it be? Do I want a chocolate croissant, pretzel, or the German pastry I can't pronounce? No, I'm getting the creamy square with local rhubarb.



At the till, Freda says, I need bread. Oliver's bread is a vast world of tasty sourdough choices. There are spelt loaves, bread for sensitive tummies, swirled crusty shapes which I



enjoy as an art form, bread from strange grains I have no idea about...I order a loaf of sliced crusty white, my newest infatuation. The colour is a bit creamier than the usual white colour you see with bleached flour.

I might get some pepper cheese and 'Mom's eggs' (eggs from Freda's mother's farm). I get Oktoberfest sausage out of the freezer, a raspberry Jam's Preserve, and an onion grown by Angela. It's all I can carry.

The retail side of Oliver's German Bakery is located at the Dieppe Market and at the Old Church, 2807 Main Street, Hillsborough. Baking orders and flour processing take place in a large modern facility behind the Hillsborough retail outlet. Oliver's farm and grain fields are 'down country' on the way to Riverside-Albert.

The Hillsborough outlet is open Tuesday and Thursday 7am-2pm, Wednesday 7am-6pm, Friday 7am-8pm, and Saturday 9am-2pm.

...I forgot to mention the cheese buns. I can't talk about Oliver without mentioning the cheese buns.

*Images by Ruth-Ann Mitchell and Jim Kitts of Oliver Hofer in the bakery and the Pierre Thibodeau grindstone.*



2849 Main St Unit 1 Hillsborough NB E4H 2X7  
www.villageofhillsborough.ca

## Village of Hillsborough

Tel: (506) 734-3733  
Fax: (506) 734-3711

Email:  
hillsboroughnb@rogers.com

## Ten Years of Foods of the Fundy Valley *By Lynne Greenblatt*

This year marks the tenth anniversary of Foods of the Fundy Valley! We incorporated in December 2010 as a result of ABCD workshops (brainstorming solutions to the challenges facing our rural communities). Foods of the Fundy Valley's mission is to foster an environment that promotes the production and consumption of local foods and local goods in the Albert County area.

Education is a key component of our mandate. We host hands-on workshops on diverse topics such as planting garlic, hydroponics, building a cob oven, beekeeping, seed security, gardening techniques and preserving.

We host a school garden every year for kids from Hillsborough Elementary School. Kids learn to plant and tend the garden, then harvest the veggies and prepare a luncheon at the school. We also have community gardens in Riverside-Albert and, new this year, at the Hillsborough Baptist Church on Salem Road in Hillsborough. Our BeeWise members spearheaded the installation of a fruit tree orchard and working beehive on the grounds of the NB Railway Museum in Hillsborough. We plan to expand that project into a Food Forest.

We've held several memorable fundraisers over the years –Oktoberfest, pig roasts, cob oven pizza at the Albert County Museum, soup and chili bars at various events. More recently, we hosted the dinner and market at the 2019 Alma Fleet Launch and served breakfast at the Eating Heritage NB food tourism symposium—all featured food prepared from locally grown and raised ingredients by our talented volunteer chefs.

Our farmers' market, another key component of our mandate, has moved around over the years, from Riverside-Albert to Alma to Hopewell Cape to Hillsborough—but our mantra has always been “make it, bake it or grow it” locally. Starting this season, we are exploring a new business model. Lately, several factors have underscored the inaccessibility of fresh foods in our rural communities. This spring we reached out to food producers within New Brunswick



to gauge interest in a consignment market. More than 40 vendors responded enthusiastically, and in June we opened the Fundy Fresh Consignment Market at the Artisans' Village in Hillsborough. It's an ideal situation for food producers who are too small or too busy to run their own retail space. The market is open seven days a week until the end of October, 10am to 6pm, and carries a wide variety of seasonal produce, meats, cheeses, eggs, baked goods, teas, coffees, snacks and treats.

Our vision is a stronger Albert County where we can enjoy local foods and our farmers can sustainably grow the local food economy. We are gratified to see the positively changing attitudes, over the past ten years, toward healthy and local foods in our community. Stay tuned—we hope to see you over the next ten years!

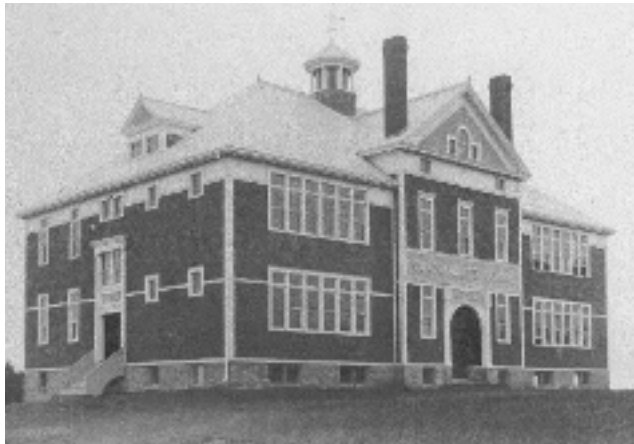
[facebook.com/FoodsOfTheFundyValley](https://facebook.com/FoodsOfTheFundyValley)  
[foodsofthefundyvalley.ca](http://foodsofthefundyvalley.ca) Images by Kris Buck.



# The 115th Anniversary of the Riverside Consolidated School

By Dawne (Wright) McLean

In addition to being the 175th Anniversary of the founding of Albert County, the year 2020 also marks the 115th Anniversary of the opening of the Riverside Consolidated School in Riverside-Albert. In September 1905, 225 students filed through the doors and experienced the most modern facilities and equipment available at the time. The Grammar School for Albert County, as it was called then, had five departments and a staff of seven teachers. Students could take courses to prepare for University Matriculation or Normal School entrance. Other departments included Household or Domestic Science, Manual Training, School of Gardening and Natural Science (which supported working in agriculture).



At the turn of the century, “consolidation” of rural schools was an educational movement promoted across Canada. In 1903, New Brunswick passed legislation encouraging the establishment of consolidated schools. The Hon. Abner Reid McClelan, a resident of Riverside and former Lieutenant Governor of NB, provided the thrust to build the consolidated school by donating \$5,000 towards its construction. The province provided \$1,000 and local taxpayers contributed the remaining \$14,000. Construction began in July 1904 on the bank of the Shepody River between the villages of Riverside and Albert. The architect,

Watson Reid of Riverside, supervised the construction of the three-storey, wooden-shingled building. Sackville contractors (H. Copp & Dixon) carried out the construction. The foundation was made of freestone quarried in Midway and New Ireland.

Although classes began in September 1905, the formal opening ceremony took place on June 15, 1906. New Brunswick's Premier L. Tweedie, J. R. Inch, Chief Superintendent of Education and other officials arrived at the Riverside Wharf by way of the *Wilfred C. Steamer*. They were greeted by the Hon. A. R. McClelan and a performance by the “Albert Drum and Bugle Band.”

Since 1905, Riverside Consolidated School (RCS) has provided a sound education and prepared students to enter many professions and occupations, and become respected community citizens and leaders. RCS has experienced many changes from its days when high school graduations were held in the auditorium. The school now has students from just kindergarten through grade five. However, some things have not changed. RCS still stands on its original location, looking much the same as it did in 1905, and still provides the best education possible to the students who enter its doors.

Riverside Consolidated School was formally designated as a Provincial Heritage Place in 1997 and in 2005 was registered as a Historic Place in Canada. Riverside Consolidated is the oldest consolidated school still in use in the province and perhaps in all of Canada!



On a personal note...RCS will forever hold a special place in my heart. I have nothing but fond memories and an appreciation for the education I received while at RCS from grades one through ten. I was very blessed to have enjoyed a teaching career at RCS for 30 years. In fact, I still get a feeling of home when I walk into the front foyer!

I'm certainly not alone in my sentiments. During the extraordinary attendance at the 2005 RCS 100th Anniversary celebrations, it was clear that former students and teachers also feel a special connection to RCS and hold many dear memories of their school days.

Today, we respect the honoured history of Riverside Consolidated, and we also see RCS as a symbol of confidence in the future of our rural community

*Images: Left: RCS in 1905. Above: RCS in the spring of 2015 with people protesting the proposed closure of the school; image by J. Wallace.*

# Recipe Corner

## Dill pickles

Stuart Liptay developed this recipe from a combination of others. For one-bottle canning, he says, "an asparagus cooking pot is just the right size and boils in no time flat."

- 1 head dill
- 1 Tbsp kosher/pickling salt
- 1 Tbsp sugar
- 1/3 cup apple cider vinegar
- 1 large grape leaf
- 1 clove garlic
- 1 hot pepper\*
- 1 Tbsp mustard seeds
- Cukes to fill the 1-L jar
- Boiling water to fill 1-L jar to top curve

\*Whatever type of hot pepper is ready at the same time as the cukes. Stuart has used Thai and jalapeno "to great success."

-Process in hot water bath 15 minutes or so. Wait a couple months. Grape leaves are a natural source of alum for crispiness.

Contributed by Stuart Liptay

## Fast pickles

- 2 English cukes, sliced into thin rounds
- 1 red or white onion, sliced thin
- 1 bunch fresh dill, chopped fine
- Small knob of fresh ginger root
- 2 bay leaves
- 1 cup cider vinegar
- 1/2 cup white sugar
- 1 tsp salt
- 2 Tbsp fennel seeds
- 2 Tbsp coriander seeds

-Combine vinegar, sugar, salt, seeds and bay leaves in a pot and bring to boil. Remove from heat. Grate a pinch

of ginger with fine grater. Toss cukes and onions in the hot liquid. Stir in dill. Put in clean jars, refrigerate until cool and serve. A batch will keep for weeks in your fridge. If you don't have all the ingredients, ask your neighbour—a true Maritime custom!

Contributed by Hanna Downey

## Mustard pickles

"I miss my Grammie Reid everyday but am so very thankful for everything she has taught me, including this delicious family favourite," says Kim Beers.

- 16 large cucumbers (seeds removed and diced)
- 4 cups chopped onions
- 1/2 cup pickling salt

-Sprinkle vegetables with salt; cover with cold water. Set aside in cool spot (do not refrigerate) for 12 hours.

### Sauce

- 5 cups vinegar
- 1 1/2 cups flour
- 7 1/2 cups sugar
- 2 Tbsp dry mustard
- 1 1/2 tsp turmeric
- 1 tsp celery seed
- 1 tsp mustard seed

-Add 4 cups of vinegar; bring to boil over medium heat. Meanwhile, in a large bowl, whisk dry ingredients together. Whisk in the remaining vinegar (1 cup) to make a paste.

-Whisk into hot vinegar, and bring to a boil. Reduce heat; simmer, stirring constantly, until smooth and thick. Add cucumbers and onions; cook on low heat gently stirring until cooked. Ladle into hot canning jars, leaving 1/2-inch head space. Enjoy.

Contributed by Kim Beers

## Sweet relish

Peggy Newcombe gave Elaine Holmstrom this recipe when Stephen and Elaine first came to New Brunswick in 1989.

"I have sold many jars of it over the years. Peggy told me that I wouldn't find a better recipe than this!" says Elaine.

- 8 large cucumbers
- 5 large onions
- 1 small cauliflower
- 1 red pepper
- 1/2 cup coarse salt

-Grind all the vegetables coarsely. Sprinkle coarse salt over vegetables. Let sit 15 minutes. Drain.

### Dressing

- 2 1/2 cups vinegar
- 1 tsp powdered ginger
- 1 1/2 cups cold water
- 1 tsp celery seed
- 5 cups white sugar
- 1/2 tsp turmeric
- 3 tsp dry mustard
- 1/2 cup flour

-Mix well and add vegetables. Simmer 30 minutes. Bottle and seal in sterilized bottles.

Contributed by Elaine Holmstrom, Peck's Colonial House B&B

An excerpt from the Albert County Museum cookbook: *Fiddleheads, Fricot & Frittata: A Hodgepodge of Atlantic Canadian Recipes*. The book is \$8 (no tax) for 200+ recipes and stories about the people and foods of Atlantic Canada. Buy at [www.albertcountymuseum.com/giftshoponline](http://www.albertcountymuseum.com/giftshoponline) or at the Albert County Museum in Hopewell Cape.



**East Coast Kids**  
Child Care & Learning Centre

Safe & fun environments that offer quality care & programs/activities for children ages 2-12 yrs.

Licensed Centres in Hillsborough & Riverside-Albert

childcare@eastcoastkids.ca 506-962-5868



**THE GARDEN GUY**  
MICHAEL MCBURNIE  
EXPERT CONSEIL EN JARDINAGE  
PROFESSIONAL GARDENING & CONSULTING  
506.232.0275

M\_MCBURNIE@HOTMAIL.COM 506.232.0275

# Community Calendar

**Saturday, August 29**

**Old Church Farmers' Market.**

9am-2pm. See page 2.

**Play Music on the Porch.**

2-5pm at the Painted Haus Art Cafe. 5905 King St., Riverside-Albert. The Painted Haus invites people onto their porch. Bring instruments, cow bells or pots and pans! Free outdoor event. Guests are asked to practice physical distancing and bring lawn chairs and face masks. Note the cafe is currently closed to the public.

**Saturday, September 5**

**Old Church Farmers' Market.**

9am-2pm. See page 2.

**Saturday, September 12**

**Old Church Farmers' Market.**

9am-2pm. See page 2.

**Live Outdoor Concert - AC175**

**celebrations.** 2-5pm. Albert County Museum. Musicians include Samantha Robichaud and Chris Colepaugh with special guests. Details on page 9. Register for free tickets.

**Monday, September 14**

**NB Provincial Election.** Time to Vote!

**Thursday, September 17**

**Albert County Health Care Foundation Inc. Annual General Meeting.** 7pm. Albert County Community Health Centre (Community Health Education Room), 8 Forestdale Rd., Riverside-Albert. Lynda Carey, Executive Director of the Riverview Boys & Girls Club, will speak about the Hillsborough After School Drop In Centre.

Anyone who contributed \$20 or more during the 2019 calendar year is a voting member. The general public is welcome and encouraged to attend.

**Saturday, September 19**

**Old Church Farmers' Market.**

9am-2pm. See page 2.

**Wednesday, September 23**

**Mobile EnviroDepot – Riverside-**

**Albert.** (Recreation Centre). 12-8pm. Details on the right.

**Thursday, September 24**

**Mobile EnviroDepot – Riverside-**

**Albert.** (Recreation Centre). 12-8pm.

**Saturday, September 26**

**Old Church Farmers' Market.**

9am-2pm. See page 2.

**Saturday, October 3**

**Old Church Farmers' Market.**

9am-2pm. See page 2.

**Saturday, October 17**

**1845 Albert County Dinner.**

See details on page 10.

**Wednesday, October 21**

**Mobile EnviroDepot– Alma.**

(Activity Centre parking lot).12-8pm. Details on the right.

**Thursday, October 22**

**Mobile EnviroDepot– Alma.**

(Activity Centre parking lot).12-8pm. Details on the right.

**Monday, October 26**

**Connecting Albert County AGM.**

3:30pm. Hillsborough, Riverside-Albert or by Zoom. The public is welcome to attend but please contact [info@ConnectingAlbertCounty.org](mailto:info@ConnectingAlbertCounty.org) if you are interested. We'll book a location once we know the number of participants.

**Wednesday, November 11**

**Flag Lowering** at Sunrise at Hopewell Cape Square by Albert County Museum as part of the region's Remembrance Day events. The ceremony will be held at the Bennett Monument beside the Albert County Cannons. Show your respect for our veterans and join us (with physical distancing). *Continued on next*

## Mobile Enviro Depot

Residents of Westmorland and Albert Counties are welcome at any Mobile Eco-Depot event, not just the one closest to them or in their community. In rural Albert County, the depot rotates between Alma, Riverside-Albert and Hillsborough. **From noon to 8pm.**

### What can you drop off?

For no fee, residents will be able to visit any Mobile Eco-Depot to dispose of the following (up to a ½ tonne truck and utility trailer load):

- Appliances (limit of 1/type): Fridge, stove, freezer, dryer, BBQ, etc.
- Electronic Waste: TVs, computer monitors, hard drives, DVD players, gaming consoles, etc.
- Furniture
- Small Household Machinery (must be emptied of gas and oil)
- Construction, Demolition and Renovation Waste
- Household Hazardous Waste: Batteries, cooking oil, aerosols, paint, light bulbs, fertilizers, chemicals, CFL bulbs, propane tanks, etc.
- Car/truck tires (maximum of 20" diameter, limit 8/person)
- Brush, branches, yard waste
- Ashes
- Glass
- Cardboard and paper
- Cooking oil
- Metal

\*No car parts, gas tanks, residential oil tanks, regular curbside waste or commercial waste

Service is for residential customers only. Commercial waste or regular curbside household waste will not be accepted. Residents are asked to sort and separate their loads by material type. Details: [www.eco-360.ca/mobile-eco-depot-program](http://www.eco-360.ca/mobile-eco-depot-program)

## A Salute to Alma's Sticky Buns

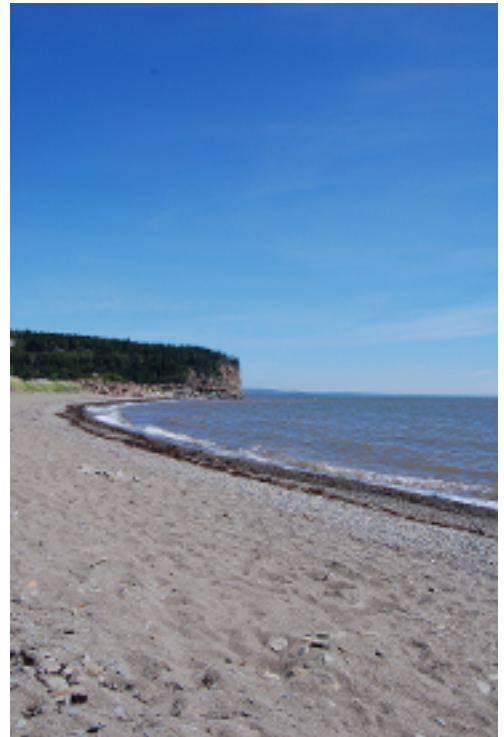
In March 2020, Alma was listed as one of the “15 Top-Rated Small Towns in Canada” by planetware.com. The village was described as “the gateway to the world-famous high tides of the Bay of Fundy” and also as “a great spot to grab a bite to eat after a hike in the park (try the sticky buns—everyone in town raves about them, and for good reason).”

A tasty tidbit of history: Miriam Kelly developed the famous sticky bun and created Kelly's Bake Shop, “which has brought visitors to Alma for more than 70 years,” says Ken Kelly. Miriam started with a recipe that dates back to around 1900 for “spudnuts,” doughnut-like buns made with mashed potatoes. She launched the treats in 1957, the year the Russian Sputnik was launched, and originally wanted to call the buns, iced with white frosting, “Spudniks.” However, Miriam changed the dough recipe because the potato component created a long and laborious step, and then called her creation a “sticky bun.”

The sticky buns are still favourites of locals and visitors. In fact, on the August long weekend this year (yes, during a pandemic), Kelly's Bake Shop sold an incredible 10,872 sticky buns!

*Written by Janet Wallace with information provided by Ken Kelly, son of Miriam Kelly and Janet's second (or third) cousin once removed.*

*Image of Alma Beach by J. Wallace.*



page.

## Community Calendar *(continued)*

### Wednesday, November 25

#### **Mobile EnviroDepot - Hillsborough.**

(Kiwanis parking lot). 12-8pm. Details in box on page 7.

### Thursday, November 26

#### **Mobile EnviroDepot - Hillsborough.**

(Kiwanis parking lot). 12-8pm. Details in box on page 7.

**Add your community event to the Connecting Albert County community calendar at [ConnectingAlbertCounty.org/calendar](http://ConnectingAlbertCounty.org/calendar).**



**The Old Church  
Farmers' Market**

2807 Main Street,  
Hillsborough

**Saturdays 9am to 2pm**

Please come to **The Old Church Farmers' Market** for Oliver's German Bakery, AnC Meats, Fundy Farms foods, Community Table products, Jems preserves, home baking, arts, crafts, music and a COVIDly-responsible good time!

## LOOKING FOR A NEW ADVENTURE IN BUSINESS



Come & meet our team to discuss our programs

<b>Loan Programs:</b> <ul style="list-style-type: none"><li>- CBDC Youth Loan</li><li>- CBDC First-Time Entrepreneur Loan</li><li>- CBDC General Business Loan</li><li>- CBDC Innovation Loan</li><li>- CBDC Social Enterprise Loan</li></ul>	<b>Also offering other programs:</b> <ul style="list-style-type: none"><li>- The Self Employment Benefit Program (SEB)</li><li>- Business Development Seminars (BDS)</li></ul>
---	--



Community Business Development Corporation  
Corporation au bénéfice de développement communautaire  
**Westmorland Albert**

337, rue Main Street, Shediac, NB E4P 2B1  
506-532-8312 • Toll Free 1-800-925-6677 • [www.cbdc.ca](http://www.cbdc.ca)



# Celebrate 175 Years of the Land, the Sea & the People of Albert County

Over the course of 2020, we are telling the stories of every community in Albert County, which includes Riverview and hugs the shores of the Petitcodiac River to the Bay of Fundy. Albert County features some of the most iconic treasures in New Brunswick, such as the beautiful Fundy National Park, Hopewell Rocks, Cape Enrage, and inland areas stretching beyond Caledonia Mountain in all directions. This celebration is presented by the Albert County Historical Society, Government of Canada, Province of New Brunswick and Hopewell Rocks.

Our rich history will be told in various ways, including a special Albert County 175 Exhibit on display at the Albert County Museum, which will be open daily 9:30-5:30 from June 6th to September 30th for self-guided tours on our 6-acre site (open as conditions allow following physical distancing protocols).

Digital means of storytelling will be used, including "Photo-A-Day," an AC175 Podcast, "Home Schooling" history reading lessons, social media platforms and videos. We are also working with publications, such as *Connecting Albert County* and other media outlets including tv, radio, newspapers and magazines, bringing the story of Albert County to you!

You may have received the special Albert County 175 Souvenir Booklet in your mailbox! We sent copies to every household in Albert County, all 15,000 of them according to Canada Post! An additional 5,000 copies were printed and extra copies are available at the Albert County Museum (by donation). If you did not receive a copy or have a request for several copies for your community group, school or business, please let us know and we will make arrangements to provide copies. Call us during business hours at 734-2003 or drop by the Albert County Museum from 9:30 to 5:30 daily to the end of September.

**Albert County 175 Collectors Pins!** Only 500 will be available. These are made in New Brunswick by Aitkens Pewter! Priced at only \$25, you will receive a one-of-a-kind lapel pin featuring the beautiful AC175 logo, a membership to the Albert County Historical Society, a season's pass to the Albert County Museum for both the 2020 and 2021 seasons, a copy of the Souvenir Magazine and an entry into the draw for the Albert County Prize Package. The proceeds go towards supporting the work of the Historical Society and AC175 programming. Purchase yours at the museum while supplies last. You can also purchase this online at [www.albertcountymuseum.com/AC175Pin](http://www.albertcountymuseum.com/AC175Pin).



**AC175 Barn Quilt** In honour of the Annual Quilt Show & Sale and the new Barn Quilt Trail that we will be working on in the coming years, we have designed and painted a special AC175 Barn Quilt. Visit the Albert County Museum to see this beautiful barn quilt featuring the iconic scenes of our county!

**Enter to win at AC175.ca!** We are drawing for an Albert County Prize Package! There are three ways to enter:

- 1) Visit our website and fill out a prize ballot.
- 2) Enter a photo or story, and your name will go into the draw.
- 3) Visit the Albert County Museum and a prize ballot will be given for every paid admission.

## Special Dates During Albert County 175

**Albert County 175 "Evening in the Parlour" Online.** See the video of the 1997 performance presented in the Court House in a typical lamp-lit parlour of 1897, the year of Queen Victoria's Diamond Jubilee. The performance was created around the theme of planning an 1897 Diamond Jubilee concert in Hopewell. View by clicking <https://youtu.be/KdKgpWwFp6A>.

Saturday, September 12. **Albert County 175 Birthday Bash Part 2!** 2-5pm, Albert County Museum (outdoors). Live music featuring some of the best New Brunswick musicians including Samantha Robichaud, Chris Colepaugh, Unforeseen and guests. A highlight will be performances of original compositions written about Albert County. The concert takes place on what is usually the Albert County Exhibition weekend. Admission is free. Space is limited due to physical distancing and a maximum crowd size to ensure public safety. Get your tickets at [www.albertcountymuseum.com/ac175ticketsept12](http://www.albertcountymuseum.com/ac175ticketsept12).

Saturday, October 17 - **1845 Albert County Dinner**. What were people eating here in 1845? You might be surprised! We will share information on a traditional meal including menu items found in 1845 with heritage meats, vegetables, desserts and drinks. Special menus will be shared online; details to follow.


Wednesday, November 11 - **Flag Lowering** at Sunrise at the Hopewell Cape Square as part of the region's Remembrance Day events. The ceremony will be held at the Bennett Monument beside the Albert County Cannons. Show your respect for our veterans and join us (physical distancing of course).

December 28-30 - **Photo Show AC175 Finale Event**. A showcase of photos taken by residents of Albert County showcasing life from 1845 to 2020. Participate by sending your photos from years past and your love for our community today! The photos will be collected and added to the Albert County Museum's permanent collection. The Photo Show will feature some of the best entries; prizes will be awarded in 3 categories: Historic, Albert County Today, and Youth Photos (18 and under).

What a great way to celebrate the year! Details to come.

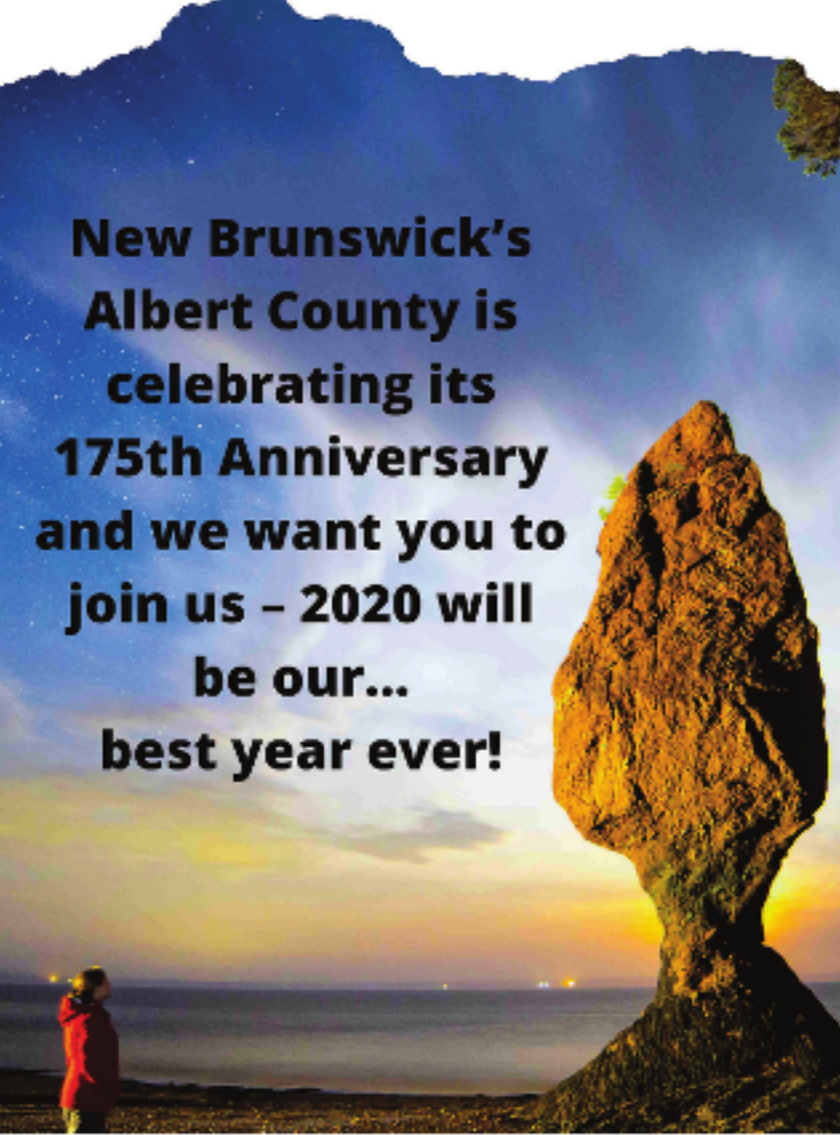
The Albert County 175 celebration is presented by the Albert County Historical Society and is supported by the Governments of Canada and New Brunswick, Hopewell Rocks, Albert County Tourism Association, Albert County Chamber of Commerce, Friends of Fundy, Bayview Chalets & Motel, Connecting Albert County, Ponderosa Pines Campground, Town of Riverview, Villages of Hillsborough, Alma and Riverside-Albert, and Broadleaf Guest Ranch.

Learn more at [AC175.ca](http://AC175.ca) and at [Facebook/albertcountymuseum](https://www.facebook.com/albertcountymuseum), or call 734-2003 or email [ac175@albertcountymuseum.com](mailto:ac175@albertcountymuseum.com).





**ALBERT 175  
COUNTY  
1845-2020**



**New Brunswick's  
Albert County is  
celebrating its  
175th Anniversary  
and we want you to  
join us - 2020 will  
be our...  
best year ever!**



**Presented by**



**Supported by**



## Hillsborough Public Library

2849 Main St., Hillsborough, 734-3722

### Hours of Operation *(note these have changed since March)*

Tuesday 3-6pm, Wednesday 1-4pm, Thursday 1-4pm, Friday 1-4pm

Closed Sunday, Monday & Saturday

### What to expect when visiting your library:

- **NEW:** The public access computer is now available but only for printing and scanning.
- Maximum Capacity. There is a limit on the number of patrons inside at a time. Please be patient as you wait your turn.
- Face Masks. We encourage you to wear a community face mask while visiting your library.
- Physical Distancing. Let's protect each other's space and maintain a two-metre distance.
- Limited Library Hours. This library is operating on reduced hours.
- Returned items. Returned items will remain on your account during a 72-hour quarantine period. All returned items are to be placed in the outside book return.
- Grab n' Go. We encourage people to make their visit as brief as possible: 10-15 minutes.

Hungry for a good book but don't have time to stop by the library? Get in touch! Write down your reading list. Call us at 734-3722 or email [hillsborough.publiclibrary@gnb.ca](mailto:hillsborough.publiclibrary@gnb.ca). We'll contact you when your order is ready.

We also encourage you to keep using our online services at [www.gnb.ca/publiclibraries](http://www.gnb.ca/publiclibraries).

*Contributed by Victoria Stroud-Arsenault*

# ROB MOORE

## MP, Fundy Royal



### Constituency Office

599 Main Street, Hampton

[Rob.Moore@parl.gc.ca](mailto:Rob.Moore@parl.gc.ca)

506-832-4200

## Here For You

Keep up to date on  
News & Events  
in Fundy Royal



Like our  
facebook page  
[RobMooreFundyRoyal](https://www.facebook.com/RobMooreFundyRoyal)

[www.RobMoore.ca](http://www.RobMoore.ca)

# BENNETT AND ALBERT COUNTY HEALTH CARE (BACH) FOUNDATION

The Bennett and Albert County Health Care (BACH) Foundation helps create a healthy, vibrant community. The BACH Foundation improves access to health care services in rural Albert County and supports programs that improve community health.

BACH Foundation supports:

- Albert County Community Health Centre in Riverside-Albert & satellite clinic in Hillsborough.
- Tele-Drive Albert County
- Little Rocks Curling
- School Spin Bikes
- Connecting Albert County
- Tele-Health
- Forest Dale Home Van
- Literacy Express
- Sistema Hillsborough
- Imagination Library



**By donating to the Bennett and Albert County Health Care Foundation, you are investing in a healthier community.**

[bachfoundation@horizonnb.ca](mailto:bachfoundation@horizonnb.ca), 882-3100

[bachfoundation.com](http://bachfoundation.com)

**Yes, I want to help**

have a positive impact on health and wellness for the people served by the Albert County Health and Wellness Centre



BENNETT & ALBERT COUNTY HEALTH CARE FOUNDATION

I would like to contribute a monthly amount of \$ \_\_\_\_\_ TO BE DEDUCTED ON:  1<sup>st</sup> or  15<sup>th</sup> of the month

I would like to contribute a one-time gift of \$ \_\_\_\_\_

Name: \_\_\_\_\_ Telephone: \_\_\_\_\_

Address: \_\_\_\_\_

City/Town: \_\_\_\_\_ Province: \_\_\_\_\_ Postal Code: \_\_\_\_\_

E-mail: \_\_\_\_\_

I have enclosed a cheque made payable to the Bennett and Albert County Health Care Foundation

I prefer to use my:  VISA  MasterCard

Card Number: \_\_\_\_\_

Expiry Date (month/year): \_\_\_\_\_

Signature: \_\_\_\_\_

Charitable Registration: 8690191 33 RR0001

Bennett and Albert County Health Care Foundation  
8 Forestdale Road, Riverside-Albert, NB E4H 3Y7  
Tel 506-882-3100 Fax: 506-882-3101

Donate online at [www.bachfoundation.com](http://www.bachfoundation.com)



## Volunteer with Connecting Albert County

We invite you to join the Connecting Albert County team! Help us spread the news and celebrate the wonderful aspects of our community, culture and environment. You can meet new people and learn new skills (we provide training, if needed). You can be the first to find out about events and news happening in your neighbourhood. Connecting Albert County is looking for volunteers for the following positions.

**Photocopiers:** businesses or organizations that can photocopy our publication in colour or black and white.

**Proofreaders:** help proofread each issue. Approx. 2 hours/month.

**Website helper:** post articles (written by others) on our website using Weebly. Requires 2 hours per month, 1-2 hours of training upfront.

**Delivery people:** help deliver our publication once a month, 2 hours/month.

**Community liaisons:** our hands and feet in the community. These people will help us engage with their community and share more local news, stories, and events. A community liaison can focus on one community or rural Albert County as a whole. Takes 1-2 hours per week.

**Board members:** join our board of directors. Much of the work is done by email with at least four meetings a year.

**Writers & photographers:** contribute your stories and photographs. We welcome stories on the people, history, culture and environment of rural Albert County. We also like articles that promote healthy living, including tips on eating healthy food, gardening, being active outside and in the community, volunteering and much more. If you have an idea, contact Janet at [info@connectingalbertcounty.org](mailto:info@connectingalbertcounty.org)



*...promoting economic and commercial prosperity in Albert County.*

Contact us today to find out the full range of benefits & services we have to offer you & your business.

[www.albertcountychamber.com](http://www.albertcountychamber.com)  
[accofc@gmail.com](mailto:accofc@gmail.com)  
P.O. Box 3051, Hillsborough  
NB. E4H 4W5

ALBERT  
COUNTY  
PHARMACY

Guardian

Feeling Better Starts Here

**Save Smart, Shop Local.**

**Given the current health climate, we have made the following adjustments to our practices:**

-Frequently touched surfaces are sanitized every 30-60 minutes. General areas are sanitized a minimum of two times per day.

-Whenever possible, we request that you please call 24 hours ahead for refills, use our Guardian app, or use our e-refill site on our website: [www.albertcountyparmacy.ca](http://www.albertcountyparmacy.ca)

-If you are sick, have a fever, sore throat or cough, we ask that you stay home and reach the pharmacist by phone with any questions and, if possible, arrange for someone else to pick up your medication.

**Thank you for your understanding and cooperation as we work to keep our staff and customers safe.**

***We have all of your back to school personal protective equipment needs including hand sanitizer, gloves, wipes, and junior and adult sized masks.***

**Our flyer is available on our Facebook page.**

**Albert County  
Pharmacy**

Store Hours:

Monday-Friday  
9am-6pm

**Saturdays:  
closed until  
further notice**

Pharmacist on Duty:

Monday-Friday  
9:30am-6pm

ALBERT COUNTY PHARMACY  
5883 King Street, Riverside-Albert, NB, E4H 4B5  
Ph: (506) 882-2226 Fax: (506) 882-2101

[www.ConnectingAlbertCounty.org](http://www.ConnectingAlbertCounty.org) ~ 13

# Supporters of Connecting Albert County

Connecting Albert County would like to thank the following advertisers and donors.

## Platinum

**Bennett and Albert County Health Care (BACH) Foundation** [bachfoundation.com](http://bachfoundation.com)

**Albert County Pharmacy** [Facebook.com/AlbertCountyPharmacy](https://www.facebook.com/AlbertCountyPharmacy)

**Friends of Fundy** [Facebook.com/FundyFriends](https://www.facebook.com/FundyFriends)

**Hon. Rob Moore, MP for Fundy Royal** [RobMoore.ca](http://RobMoore.ca)

## Gold

**Albert County 175** [AC175.net](http://AC175.net)

**CBDC Westmorland Albert** [www.CBDC.ca](http://www.CBDC.ca)

**OMISTA Credit Union** [OMISTA.ca](http://OMISTA.ca)

## Silver

**Albert County Chamber of Commerce** [albertcountychamber.com](http://albertcountychamber.com)

**Broadleaf Ranch** [broadleafranch.ca](http://broadleafranch.ca)

**Cape Enrage Fundy Log Cabin** [fundycottage.com](http://fundycottage.com)

**Crooked Creek Convenience** [Facebook.com/ccconvenience](https://www.facebook.com/ccconvenience)

**East Coast Kids Child Care & Learning Centre** [eastcoastkids.ca](http://eastcoastkids.ca)

**Foods of the Fundy Valley** [facebook.com/FoodsOfTheFundyValley](https://www.facebook.com/FoodsOfTheFundyValley)

**Mike's Bike Shop** [mikesbikeshop.ca](http://mikesbikeshop.ca)

**The Old Church Farmers' Market** [Facebook.com/The-Old-Church-Farmers-Market-110454250674986](https://www.facebook.com/The-Old-Church-Farmers-Market-110454250674986)

**Village of Hillsborough** [villageofhillsborough.ca](http://villageofhillsborough.ca)

**Village of Riverside-Albert** [riverside-albert.ca](http://riverside-albert.ca)

**The Garden Guy (Micheal McBurnie)** [Facebook.com/thegardenguymicheal](https://www.facebook.com/thegardenguymicheal)

## Bronze

**Chipoudy Communities Revitalization Committee** [Facebook.com/communityrevitalization](https://www.facebook.com/communityrevitalization)

**Falcon Ridge Inn B&B** [www.falconridgeinn.nb.ca](http://www.falconridgeinn.nb.ca)

**Fundy Highlands Motel and Chalets** [www.fundyhighlandchalets.com](http://www.fundyhighlandchalets.com)

**Hillsborough Baptist Church** [hillsboroughbaptist.org](http://hillsboroughbaptist.org)

**Jeff MacDougall, SouthEastern Mutual Insurance** [jeff.macdougall@semutual.nb.ca](mailto:jeff.macdougall@semutual.nb.ca)

**Village of Alma** [villageofalma.ca](http://villageofalma.ca)

For six years, Connecting Albert County has provided our community with information on people, places and events in rural Albert County. Every month, hundreds of people read our publication. The electronic issue is emailed to 550+ subscribers and many others read the issue online. Hundreds of free print copies are distributed each month throughout rural Albert County. Once a year, we mail an issue to 2300 homes from Stoney Creek to Alma, and to Parkindale and Elgin.

To volunteer, contribute a story or find out more, email [info@ConnectingAlbertCounty.org](mailto:info@ConnectingAlbertCounty.org). To find out more about ads or donations to support our work, visit [ConnectingAlbertCounty.org](http://ConnectingAlbertCounty.org).

For details, please email [info@ConnectingAlbertCounty.org](mailto:info@ConnectingAlbertCounty.org) or mail CAC, 8 Forestdale Road, Riverside-Albert, NB E4H 3Y7.

**We hope you will consider supporting Connecting Albert County.**