

CONNECTING ALBERT COUNTY

*Celebrating rural
Albert County*

www.ConnectingAlbertCounty.org

Image by Deborah Carr

TELE-DRIVE TO THE RESCUE

It's a long walk from our house to the nearest grocery store. It's even longer for my preschooler's wee little legs. Plus, I'm pregnant. My spouse has to drive all over Canada for his job and can be gone for up to a month at a time, so when our second vehicle broke down without notice, things were grim. If he takes time off, there's no extra cash to fix the car situation, and without him, we're walking.

As most folks in rural Albert County know, calling a taxi in from

the city is expensive if not impossible. We're lucky in Albert County because we've got Tele-Drive and all the wonderful folks who make it work. I called them over a year ago when a car part was going to take a month to arrive, so I knew I could call them this time too.

What does it mean to a hormonal pregnant lady with a preschooler at her side that she can get some groceries and make it to her prenatal appointments after all?

Continued on page 2.

SEPTEMBER 2016

Inside:

Tele-Drive ~ 1

Albert Cty. Area Community
Health Assessment ~ 2

Albert County Exhibition ~ 3

Albert County Exhibition
Schedule ~ 3

Weekly Events ~ 4

Pokemon Go in Albert
County ~ 4

Community Calendar ~ 5

Save the Mapleton
Acadian Trail ~ 7

Supporters ~ 8



Tele-Drive volunteer driver Sharon Campbell in front of Hillsborough Freshmart after a Monday grocery run.

Want to know what is going on in rural Albert County?

Check out the articles & calendar at www.ConnectingAlbertCounty.org You might be surprised to learn how much is going on from Stoney Creek to Alma, NB. Subscribe to our monthly e-newsletter to learn more.

Connecting Albert County

September 2016. Volume 2. No. 8
ISSN 2369-1174/1182 (digital)

Connecting Albert County reflects the passion and hard work of many people in rural Albert County, including Joanne Butland, Deborah Carr, Joseph Gallant, Barb Gebuhr, Mindy Holmstrom, Susan Quinn & Janet Wallace (Coordinator & Editor).

We appreciate the support of the Bennett and Albert County Health Care (BACH) Foundation, Albert County Health and Wellness Centre, Forest Dale Home, Village of Hillsborough, and the supporters listed on the back cover.

To donate, submit articles or provide feedback, email us at **info@connectingalbertcounty.org** or send mail to CAC, 5836 King Street, Riverside-Albert, NB E4H 4B9

www.ConnectingAlbertCounty.org

Distribution sites:

Limited numbers of free copies are available at the following sites:

Hillsborough: Scotia Bank, Hillsborough Freshmart, Hillsborough Village Office

Riverside-Albert: Albert County Pharmacy, Crooked Creek Convenience, Forest Dale Home, Albert County Health & Wellness Centre, Riverside-Albert Village Office

Alma: Harbour View Market and Restaurant, Fundy General Store, Alma Village Office

Copies are also available at www.connectingalbertcounty.org/newsletter

Tele-Drive Cont. from page 1.

It means A LOT. It means we won't starve or drive our friends away with favour requests. It takes the stress off my spouse who feels guilty for leaving us stranded so we can have an income. It reassures us that should our preschooler need to visit the doctor we can get there. It also develops a sense of community in our children, and that's no small feat. They'll grow up knowing that someone in our community, maybe someone they don't even know, will be there for them should they need it.

Some stuff you can see coming, like a storm rolling over the Bay, but other stuff catches you up when you least expect it. So if you find yourself stranded, don't worry, Tele-Drive will be there for you. They'll even take you for groceries for free on Mondays! So call them, don't suffer in isolation, they're happy to help. And if times are

good and you find yourself with free time, why not volunteer as a driver? You never know which of your neighbours is in a jam, and you might even make a new friend!

How Tele-Drive works

Volunteer drivers pick up users of the service at their homes and take them to healthcare facilities, health-care providers, food banks, grocery stores, day-care, job and training opportunities. To arrange a ride, call 875-1190 or email teledriveac@gmail.com 48 hours ahead. Tele-Drive is currently looking for volunteers in the Hillsborough area.

Every Monday, Tele-Drive, with the support of Forest Dale Home and Hillsborough FreshMart, provides free trips to the grocery store. Tele-Drive Albert County is a registered charity and welcomes donations. Tele-Drive receives support from the Bennett and Albert County Healthcare (BACH) Foundation.

ALBERT COUNTY AREA COMMUNITY HEALTH ASSESSMENT

The Albert County Area Community Health Needs Assessment is now completed. The Bennett and Albert County Health Care (BACH) Foundation Inc. is pleased to work in partnership with the Albert County Health and Wellness Centre and the broader community to address the ten priorities identified by the communities in the Albert County Area Community Health Needs Assessment. The ten priorities are:

1. The need to improve mental resiliency and coping skills among children & youth in the community
2. The need for Albert County Health & Wellness Centre outreach services in the community of Hillsborough
3. The need for improved access to mental health services.
4. An insufficient amount of safe, affordable housing options in the community

5. The need for improved supports in the community for young families that are struggling and experiencing difficulties

6. The need for improved collaboration between the municipalities in the area and between municipalities and health and wellness professionals in the community

7. Food insecurity in the community

8. The need for additional programs and services in the community to allow seniors to become more engaged, connected & mobile

9. The need to evaluate the current function of the Albert County Health & Wellness Centre and strategize on how to move forward with the original vision of the CHC model of care

10. Transportation issues in the community that impact health.

ALBERT COUNTY EXHIBITION *By Barb Gebuhr*

After 103 years, one might think that there is nothing new at the Albert County Exhibition, but you would be wrong! The 20 directors of the ACE work hard to come up with things to delight people of all ages.

There will be all kinds of food. This year, the canteen will expand to include Curly Fries, very thin spiral slices of potato, deep-fried and salty - true carnival food! Canteen manager, Andrew Akerley, has a friendly competition each year with Dining Hall manager, Bev Best, to see which venue brings in the most profit.

Many people come to the ACE just for the turkey or roast beef dinners; it has become a tradition. After years of keeping the price low, the dinner will cost \$12 for adults this year, while maintaining the children's meal at \$5. It is a bargain for

the homemade, hot delicious plate with all kinds of sides – pickles, coleslaw, rolls and a wide variety of pies – a fabulous country feast.

Bev and her team of volunteers return year after year. When asked why she would take a week's vacation and work so hard for free, Bev said, "Because I love it. I meet so many people, as well as old friends. I love to see the Caledonia students each year – how they improve over the four days of working here. Older community members come back to teach the kids how to prep the meal – we go through plenty of band-aids as they learn to peel vegetables!"

For many years, the grade 12 students from Caledonia Regional High School have worked in the dining hall to offset the cost of their graduation week expenses. *Cont. p. 6.*

ALBERT COUNTY EXHIBITION

THURSDAY, SEPT. 15

9:30am Draft Horses
12pm-8pm Exhibition Hall open
12-1pm For Good Health's Sake, Run, Jump, Shake!
1pm-2:30pm Maple Sugar concert
2pm-evening Draft Horse
4:30pm-7pm Turkey Dinner
8pm Opening & Queen Pageant
9pm Light Horse Show

FRIDAY, SEPT. 16

9:15am School Activities, Games
12:30pm Entertainment
1pm Oxen Display
1:30pm Beef Show
3pm Draft Horses
4:30pm-7pm Roast Beef Dinner
4:45pm Light Horse Show
6pm Draft Horse Driving
7pm-9:30pm Walk-In Bingo
7:30pm Wheelbarrow Race
8:30pm Horse Pull –Triple

SATURDAY, SEPT. 17

8am 4-H Interclub Competition
11am Parade
12:30pm-7pm Turkey Dinner
12:30pm Light Horse Show
1pm Magician
2:30pm Draft Horse Teams
3:30pm Lawn Tractor
4pm ATV Obstacle Course
5pm Draft Horse 4-In-Hand Hitch
6:15pm Parade Winners Announced
6:20pm Oxen Pull
7pm-9:30pm "Justin Bannister and Friends" Country Music Concert
7:30pm Hay Bale Roll
8:30pm Drill Team
9pm Light Horse Show

SUNDAY, SEPT. 18

9am Light Horse Show
12pm Draft Horse: 6-in-Hand
1pm-5pm Roast Beef Dinner
1pm Light Horse Show
1:30pm Children's Variety Show
2pm Oxen
2:30pm Horse Pull - Double

ALBERT COUNTY PHARMACY **Guardian**
Feeling Better Starts Here

Save Smart, Shop Local.

- Fill your prescriptions at Albert County Pharmacy and get Guardian Rewards.
- Receiving high-priced prescriptions from another pharmacy?
Ask us how to keep your business **local** and get **better value**.
Ask our pharmacist how you can pick up your prescriptions on Saturdays.

Meet Craig McDermott- Pharmacist

Craig has over 20 years experience as a community pharmacist. Craig has a particular interest in helping seniors manage their medications. Family life keeps Craig & his wife Anne-Marie busy with three children still at home. The kids all enjoy outdoor activities, so he can't wait until they visit Albert County & view the Hopewell Rocks, stay at the Ponderosa Campground & bike along the trails.

Craig welcomes current and new customers alike to call or drop by to discuss any of their medication concerns. Of particular note, we have a new graduate pharmacist, Chelsea, who will be helping us offer more Medication Reviews and vaccinations. Seniors and other clients who are covered under the New Brunswick Drug Program are eligible for a free medication review once yearly; others receive a tax-deductible receipt for this service.



ALBERT COUNTY PHARMACY
5883 King Street, Riverside-Albert, NB, E4H 4B5
Ph: (506) 882-2226 Fax: (506) 882-2101

WEEKLY EVENTS

Mondays

Free Grocery Trips.

Door-to-door service for residents from Alma- Hillsborough to Hillsborough Fresh Mart. Call 875-1190 or email teledriveac@gmail.com

Wellness Walking Walkers.

Join the group at 6:15 at the Old Bank in Riverside-Albert.

Tuesdays

Zumba, Riverside Albert - Drop-ins welcome. 7:30 - 8:30pm. Riverside Consolidated School. For details, contact Evelyn Sachs at 882-2831.

Wednesdays

Shepody Food Bank. 1-3pm. Albert Cty Health & Wellness Centre, Riverside-Albert. Bring Medicare numbers for all household members.

Wellness Walking Walkers.

Join the group at 6:15 at the Covered Bridge in Hopewell Hill. Duration is up to 90 minutes.

Thursdays

Free Community Playgroup 9:30-11:30am. Starts up Sept. 15th. At Hillsborough Baptist Church open to anyone caring for children 0-6 years old. No advance registration needed. Bring indoor shoes and a healthy snack. www.facebook.com/hillsboroughplaygroup

Forest Dale Home - Seniors Club.

A free support program for seniors living in the community who would otherwise be unable to participate in community activities. Seniors will participate in activities, be provided with a nutritional snack and have

the option of a full course meal at noon for a minimal fee. Contact Amanda Rossiter at 882-3017 or dayprogram@forestdalehome.ca

Chase The Ace - Friends of the Hillsborough Arena. Friends of the Hillsborough Arena hosts 'Chase the Ace' at the Hillsborough Golf Course. From 6pm to 7pm, purchase raffle tickets (3 for \$5.) Draw 7:15pm. You need to be present to win. Proceeds towards upgrades and improvements to the Hillsborough Arena.

Zumba, Riverside Albert - Drop-ins welcome. 7:30-8:30pm. Check calendar for location. For details, contact Evelyn Sachs at 882-2831.

POKEMON GO IN ALBERT COUNTY

If you haven't heard, the gaming app Pokemon Go has exploded in popularity since its Canadian release on July 17th and is now found in Albert County.

The game, which is played using a smartphone, merges elements from the Pokemon series (catching Pokemon, gyms, hatching eggs, and Pokemon battles) with real-world exploration and visiting sites of interest. PokeStops and Pokemon Gyms, especially, are attached to local sites of interest. Pokestops are areas where pokeballs (in-game items needed for catching Pokemon) and eggs can be acquired. Pokemon Gyms are locations where players can battle as one of three teams for control of the gym in a king of the hill type of contest. Pokemon eggs require the player to actually walk a set distance for them to hatch and encourage further exploration.

Here in Albert County, locations where PokeStops may be found include the Riverview Town Hall and the old Hillsborough Baptist Church building.

The game, which is played using a smartphone, merges elements from the Pokemon series with real-world exploration.

Pokemon Gyms can be found at the Albert County Museum in Hopewell Cape and the Railway Museum in Hillsborough.

Niantic, the company behind Pokemon Go, used location data that is at least two years old (which

is why a PokeStop is located at the old Hillsborough Baptist Church building rather than the new one). There are more but you will have to find them yourselves.

Some businesses have been quick to take advantage of Pokemon Go's ability to draw in potential customers. On July 24th, the Albert County Museum used an in-game item called a 'lure' to greatly increase the appearance rate of wild Pokemon in the immediate area. As the location of a Pokemon Gym and three PokeStops the Museum is already an attractive location for aspiring Pokemon Trainers. Albert County has many interesting places to visit. And Pokemon Go can only help bring people to them.

By James Wilson

Fridays

Card parties. 6:30 pm, Alma Leisure Centre. Everyone welcome, all ages.

Chase the Ace.

6pm-7:30pm. Last ticket sale 7:15. Joint effort of CCRC and Fundy Curling Club to raise money for the ice plant & Lifelong Learning Centre at Riverside Consolidated School. At Fundy Curling Club, Riverside-Albert. 3 tickets/\$5. Light supper available. 882-2573, 882-2052, 882-2626.

Saturdays

Farmers & Crafters Museum

Market. Foods of the Fundy Valley hosts a farmers and crafters market from 9am -1pm, featuring locally sourced products at the Albert County Museum, Hopewell Cape.

Breakfast at the Museum.

Different menu from week to week featuring locally sourced ingredients; 9am-noon at Albert County Museum, Hopewell Cape. Cost: \$7.

Sundays (Sept 4th & Sept 18th)

Broadleaf Sunday Brunch.

10am-2pm. Theme brunches at Broadleaf Guest Ranch.

COMMUNITY CALENDAR

Friday to Sunday, Sept. 2-4

Fundy Sky Party. Astronomical activities at Fundy Park.

Friday September 2

The Two Birdz and Jane Ehrhardt
An evening of acoustic folk groove. Parkindale Hall, 3434 Rte 895, \$10, doors open at 7:30, concert 8:00pm

Saturday September 3

Keith Hallett An evening of blues guitar, old-time style Parkindale Hall, 3434 Rte 895, \$10, doors open at 7:30, concert 8:00pm

Sunday September 11

Oh how we Relish our Pickles!
1:30pm Foods of the Fundy Valley workshop. Participants will leave with recipes, sample jars of each and the hands-on knowledge of how to make their own in the future. Albert County Museum, Hopewell Cape. This workshop is free/pay what you can with a \$10 suggested donation. To register, email ffvworkshops@gmail.com

Monday September 12

Hillsborough Village Council meeting. 6:30-9pm Council Chamber at the Hillsborough Village Office, 2849 Main St, Hillsborough

Riverside Albert Village Council monthly meeting 7-9pm Lower level, RA Recreation Centre.

Thursday to Sunday, Sept. 15-18

Albert County Exhibition

Riverside Albert Fairgrounds
See page 3 and p 6 for details

Sunday September 18

Antique Road Show

2-4pm Join us at the Albert County Museum to have your antiques appraised \$5/item or \$3/10.

Monday September 19

Alma Village Council Meeting

7-9pm Alma Village Office
8 School St, Alma

Wednesday September 28

Business Information Session - Canadian Business Development Corp.

Noon-1pm. Planning on going into business? Are you thinking about expanding? CBDC staff will host weekly business information sessions covering topics such as preparing a business plan, how to access and qualify for government programs, the role of the CBDC and how CBDC plays a role in helping you towards the road of entrepreneurship. Sessions are free of charge and strictly confidential. To register: 532-8312 or 1-800-925-6677. Hillsborough Village Office

Thursday September 29

Opening Windows to Our Past

7:30pm Visit the past through Diaries from Albert County, Albert County Museum, Hopewell Cape

Saturday October 1

Sauerkraut is a Snap!

1pm Foods of the Fundy Valley workshop. Albert County Museum, Hopewell Cape. This workshop is free/pay what you can with a \$10 suggested donation. To register, email Elizabeth at ffvworkshops@gmail.com

DID YOU KNOW?

Albert Mines was a booming community in the mid-1800s due to the wide variety of mineral resources found in the area. Gold, silver, lead, zinc, copper, manganese, gypsum, oil, gas and natural gas were found, but the most important find was "Albertite," a black bituminous substance that yields oil and gas. Albertite is only found in Albert County and was mined for about 30 years. By 1870, the large reserves of Albertite were depleted and only random pieces can today be found in the area.

Albert Cty Ex. Cont. from page 3.

For each shift they (or family member/friend) work, for donation of pickles, pies or rolls in their name, a certain amount of money is subtracted. For most grads, by the time the four days are up, they are looking at a free week of fun in June! The diners are treated to homemade goodies donated in the name of a grad. It's a win-win. For Bev and her team, there are days filled with laughter and joking between kids and adults, all working toward a common goal.

This year's Exhibition book is dedicated to Winston Steeves, who was "the announcing voice" of the ACE for many years. As a young boy he attended the fair with his family and Winston continued throughout his life to be involved with the Fair, exhibiting horses and serving on the Board of Directors. There are few over the age of five who wouldn't remember his inimitable style announcing classes and events, and encouraging and joking with the dozens of school kids on the Friday morning School Events. He made so many people laugh!

Dawne McLean has been organizing the Queen Pageant since 1983. The contestants are enrolled in grades 9-12. A panel of independent judges interviews the contestants who are judged on their involvement with the exhibition, their poise, personality, communication skills and community volunteer work. The Queen is crowned each Thursday following the Official Opening. Dawne talked about the pleasure of working on the board of directors, with the Queen contest becoming a rewarding experience where young women can be recognized and encouraged for volunteering.

The Exhibition Hall is the place to see who has grown outstanding vegetables and fruits, which children are creative, whose baking tickled a judge's sweet tooth, and who has done the most exquisite crafts. Stephen Holmstrom has been organizing the exhibits and "manning his post" for many years. He notes that a lot of tourists come through and are "blown away at the idea of so much displayed in such a little area."

Stephen notes a decline in the number of exhibitors and wishes more young people would enter. Freezing is becoming a popular alternative to canning, but he encourages anyone to enter, to bring more of their crops and crafts to the hall. He and his wife Elaine put together a prize package for a ticket draw to raise money for the Exhibit Hall. The ribbons and prizes for the children cost a lot of money; last year their draw raised \$600 for the recognition awards. Stephen finds "great joy from the people who look at the exhibits and comment favourably on them. It's a pride in our community that brings me back year after year."

Robin Stuart, a young mother of two preschoolers with a full-time job, has taken on the role of director recently. "Because I've always been a part of the fair, it's in my blood. It's great to be part of something where my voice makes a difference – where my ideas can make people happy and hopefully enjoy the fair as much as I always have." She is coordinating the children's activities on Sunday afternoon. She kept some of the classics, like the Doll Carriage Parade but added a Trucks and Tractors event, (bikes and trikes are also welcome) decorated in a farming theme.

There will be a "Fair-themed Costume" parade this year (a living carousel was seen in a past contest). Children will dress as something to do with the ACE. Robin has arranged for a magician in the Oulton Hall on Saturday afternoon. The children will be amazed and delighted.

Terry Steeves, ACE President since 2005, has been dedicated to bringing improvements to the fairgrounds and the facilities, so the Exhibition site, which now includes a roofed arena, can be used for other community activities and events. Another who takes holidays to be available for all kinds of troubleshooting for the "Fair Week" as well as working hard all year with the ACE always on his mind.

A common theme is "Giving Back" to the community, on the part of all twenty directors of the ACE Board. No one is paid for their countless hours of volunteering; many take yearly vacation time in order to spend it on behind the scenes work, using tractors and equipment from their own barns, washing innumerable dishes, cleaning up, getting exhibits ready – the hundreds of unremarkable jobs that make the Fair what it is each year. As Robin reminded me, this is a 12-month commitment, the planning and preparation is done year-round, not just in September. As Bev Best put it – "It's a country thing – we are all passionate about it."

The Albert County Exhibition runs from Thursday, Sept. 15 through Sunday, Sept. 18. For a complete listing of events, visit www.ConnectingAlbertCounty.org and click on 'Calendar.'

By Barb Gebuhr

SAVE THE MAPLETON ACADIAN TRAIL *By Deborah Carr & Moranda van Geest*

A casual passerby might consider the village of Elgin, located along the picturesque Pollett River, to be a sleepy little hamlet. They would be wrong. “This isolated community is full of life,” says Moranda van Geest.

Moranda heads up the Elgin Eco Association (EEA), a dedicated group that has accomplished much in this small rural area, including building a community garden, installing ‘little libraries’, organizing community events and children’s programs, conducting interpretive hikes, organizing the challenging Tour of Elgin mountain bike race — all centered around, or supporting, their crowning achievement: The Mapleton Acadian Forest Trail.

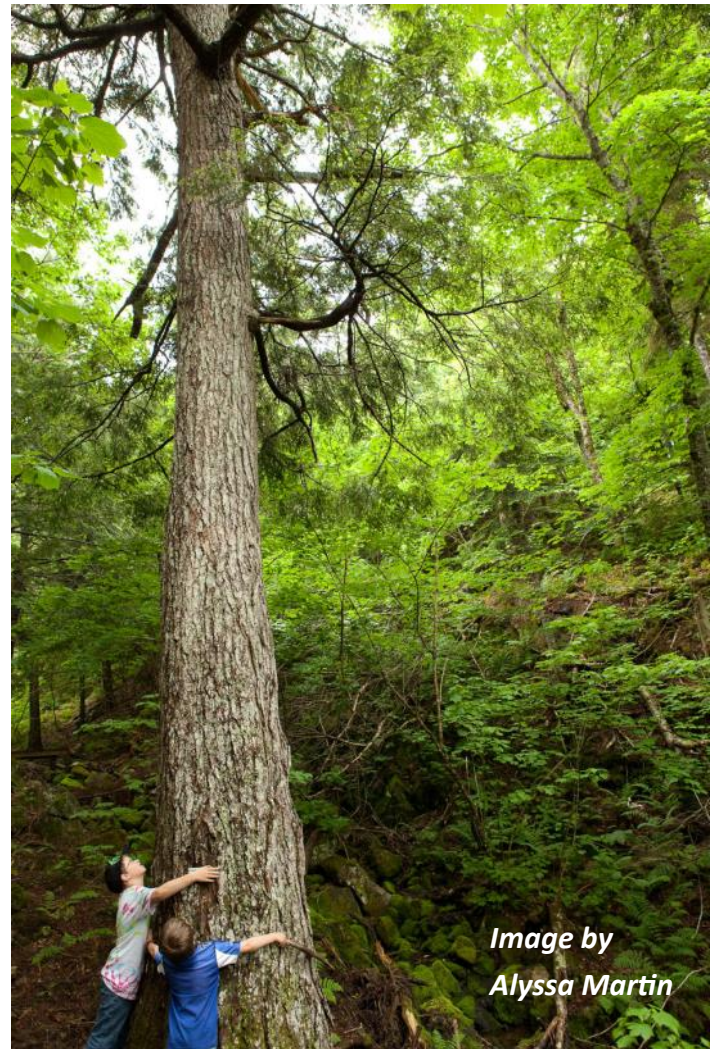
The trail brought hikers and snowshoers, birdwatchers and geo-cachers into the community. Young and old alike enjoyed the trail’s delights: 121 species of plants, 60 species of moss and 41 species of birds have been identified on the property. This forest of hemlocks, spruce, birch and beech is a true Acadian Forest — a natural mix of soft and hard wood that is becoming an increasingly rare treasure.

All was well until the property was sold to a private business interest and slated for clearcutting.

All over the province, citizens are banding together to protest the massive logging and glyphosate spraying operations that are replacing the mixed natural forest of our crown lands with clearcuts and monoculture tree farms.

Elgin itself — traditionally a favourite destination for viewing brilliant autumn colours — has seen thousands of hectares of forestland skinned and cleared during recent years. Heartbroken to see spectacular stands of maple trees chipped for paper products, and helpless to stop the destruction of wildlife habitat around them, the EEA knew there was only one way to save it...and that was to buy it.

EEA mounted several community fundraisers and an online fundraising campaign to purchase the land.



*Image by
Alyssa Martin*

Thanks to the New Brunswick Wildlife Trust Fund for a donation of \$10,000, to Craig Norris of Videoband for donating a fundraising-screening of his movie, “Surviving the Fundy Footpath,” and many other private and in-kind donations, the group has raised \$47,000 of their goal of \$75,000 but still needs help.

“This was no easy task,” says Moranda Van Geest who heads up the EEA. “It takes a lot of time and effort from many volunteers to bring this campaign to the forefront. “Save the Mapleton Acadian Trail” has brought the vast and ongoing clearcutting into the limelight, and people believe that by donating to this cause, another piece of land will be saved from clearcut and preserved for future generations.” This will be a gift from all of you for the future.”

To learn more, contact Moranda Van Geest (506-756-2518 or elgineco@hotmail.com), or you can visit www.elgineco.com. You can donate online at chuffed.org/project/save-the-mapleton-acadian-forest-trail-from-clearcutting

An advertisement for The Hopewell Rocks. It features a large, scenic photograph of the rock formation. The text "The Hopewell Rocks" is prominently displayed at the top. Below it, the slogan "Walk on the Ocean Floor! / Marchez sur le fond marin!" is written. A diamond-shaped logo with a silhouette of a person is also present. At the bottom, the phone number "1 877 734-3429" and the website "www.thehopewellrocks.ca" are listed. There are also icons for accessibility and a small map of the location.

Supporters of Connecting Albert County

Connecting Albert County would like to thank the following supporters. Learn how you can support our work at www.connectingalbertcounty.org/supporters.html

Platinum Support

Bennett and Albert County Health Care (BACH) Foundation

BACH Vision: To have a positive impact on health and wellness for the people served by the Albert County Health and Wellness Centre with the support of our community and the satisfaction of our donors.

The funds are used “to enhance the health and wellness of the people served by the Albert County Health and Wellness Centre.” The Bennett and Albert County Health Care (BACH) Foundation raises funds to help the Albert County Health and Wellness Centre. BACH has financed the Telehealth and TeleHomeCare programs, as well as purchasing new equipment, including X-ray and digital imaging equipment. The foundation also supports many great community initiatives including Tele-Drive Albert County, Literacy Express, the Imagination Library, spin bikes in classrooms, and Connecting Albert County. www.bachfoundation.com



BENNETT & ALBERT COUNTY
HEALTH CARE FOUNDATION

Gold Support

Albert County Pharmacy: locally-owned Guardian pharmacy offering prescription services for over 30 years. Post office, gift ideas, treats, household and personal needs. www.albertcountypharmacy.ca (see pp. 3)

The Hopewell Rocks: Enjoy full access to this unique provincial icon for two consecutive days; providing you the flexibility to view both high and low tide. www.thehopewellrocks.ca

Tele-Drive Albert County Inc.: The registered charitable organization provides affordable transportation to rural Albert County with door-to-door pick-up service. If you are interested in donating, volunteering or getting a ride, find Tele-Drive on Facebook. call 875-1190 or email teledriveac@gmail.com.

Silver Support

Albert County Hardware & Cooke's Quik Mart: Hillsborough's Community Hardware Store, established in 2012 and committed to providing outstanding customer service to neighbours and friends. www.facebook.com/AlbertCountyAceHardware

Broadleaf Guest Ranch: Country Style Cabins, Full Service Campground, Ranch Restaurant and Outdoor Adventures including Horseback Riding, Canoeing and Biking. www.broadleafranch.com

Chocolate River Publishing: Telling our New Brunswick story to our children and the world. www.chocolateriver.ca

Crooked Creek Convenience: The place to find gluten-free, celiac-safe foods, fresh coffee, snacks, groceries, along with free books and welcoming smiles. crookedcreekconvenience.wordpress.com

Hillsborough Freshmart: Full-variety grocery store with meat, produce and bakery. Store-made sausage, pizza, chicken & popcorn. Open 7 days/week 8am till 9pm Find [Hillsborough Freshmart on Facebook](#)

Peter & Sybil Wentzell

Bronze Support

Chipoudy Communities Revitalization Committee (CCRC)
www.facebook.com/communityrevitalization

Cinnamon Soul Café & Bakery www.facebook.com/CinnamonSoulCafe

The Maple Monarchists
maplemonarchists.weebly.com

Point Park Petro Canada www.facebook.com/Pointparkpetro

Village of Riverside-Albert: www.riverside-albert.ca

Learn more, subscribe or donate to our work at www.ConnectingAlbertCounty.org